



This is “Appendix A: Graphs in Economics”, appendix 1 from the book [Macroeconomics Principles \(index.html\)](#) (v. 1.1).

This book is licensed under a [Creative Commons by-nc-sa 3.0](http://creativecommons.org/licenses/by-nc-sa/3.0/) license. See the license for more details, but that basically means you can share this book as long as you credit the author (but see below), don't make money from it, and do make it available to everyone else under the same terms.

This content was accessible as of December 29, 2012, and it was downloaded then by [Andy Schmitz](#) (<http://lardbucket.org>) in an effort to preserve the availability of this book.

Normally, the author and publisher would be credited here. However, the publisher has asked for the customary Creative Commons attribution to the original publisher, authors, title, and book URI to be removed. Additionally, per the publisher's request, their name has been removed in some passages. More information is available on this project's [attribution page](http://2012books.lardbucket.org/attribution.html?utm_source=header).

For more information on the source of this book, or why it is available for free, please see [the project's home page](#) (<http://2012books.lardbucket.org/>). You can browse or download additional books there.

Chapter 21

Appendix A: Graphs in Economics

A glance through the pages of this book should convince you that there are a lot of graphs in economics. The language of graphs is one means of presenting economic ideas. If you are already familiar with graphs, you will have no difficulty with this aspect of your study. If you have never used graphs or have not used them in some time, this appendix will help you feel comfortable with the graphs you will encounter in this text.

21.1 How to Construct and Interpret Graphs

LEARNING OBJECTIVES

1. Understand how graphs show the relationship between two or more variables and explain how a graph elucidates the nature of the relationship.
2. Define the slope of a curve.
3. Distinguish between a movement along a curve, a shift in a curve, and a rotation in a curve.

Much of the analysis in economics deals with relationships between variables. A variable is simply a quantity whose value can change. A **graph**¹ is a pictorial representation of the relationship between two or more variables. The key to understanding graphs is knowing the rules that apply to their construction and interpretation. This section defines those rules and explains how to draw a graph.

Drawing a Graph

To see how a graph is constructed from numerical data, we will consider a hypothetical example. Suppose a college campus has a ski club that organizes day-long bus trips to a ski area about 100 miles from the campus. The club leases the bus and charges \$10 per passenger for a round trip to the ski area. In addition to the revenue the club collects from passengers, it also receives a grant of \$200 from the school's student government for each day the bus trip is available. The club thus would receive \$200 even if no passengers wanted to ride on a particular day.

The table in [Figure 21.1 "Ski Club Revenues"](#) shows the relationship between two variables: the number of students who ride the bus on a particular day and the revenue the club receives from a trip. In the table, each combination is assigned a letter (A, B, etc.); we will use these letters when we transfer the information from the table to a graph.

1. A pictorial representation of the relationship between two or more variables.

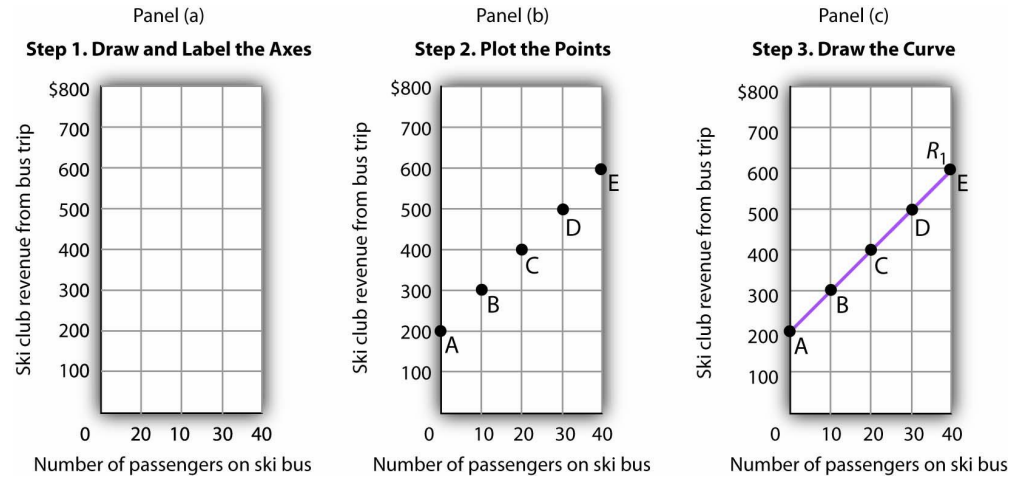
Figure 21.1 *Ski Club Revenues*

Combination	Number of passengers	Club revenue
A	0	\$200
B	10	300
C	20	400
D	30	500
E	40	600

The ski club receives \$10 from each passenger riding its bus for a trip to and from the ski area plus a payment of \$200 from the student government for each day the bus is available for these trips. The club's revenues from any single day thus equal \$200 plus \$10 times the number of passengers. The table relates various combinations of the number of passengers and club revenues.

We can illustrate the relationship shown in the table with a graph. The procedure for showing the relationship between two variables, like the ones in [Figure 21.1 "Ski Club Revenues"](#), on a graph is illustrated in [Figure 21.2 "Plotting a Graph"](#). Let us look at the steps involved.

Figure 21.2 *Plotting a Graph*



Here we see how to show the information given in [Figure 21.1 "Ski Club Revenues"](#) in a graph.

Step 1. Draw and Label the Axes

The two variables shown in the table are the number of passengers taking the bus on a particular day and the club's revenue from that trip. We begin our graph in Panel (a) of [Figure 21.2 "Plotting a Graph"](#) by drawing two axes to form a right angle. Each axis will represent a variable. The axes should be carefully labeled to reflect what is being measured on each axis.

It is customary to place the independent variable on the horizontal axis and the dependent variable on the vertical axis. Recall that, when two variables are related, the dependent variable is the one that changes in response to changes in the independent variable. Passengers generate revenue, so we can consider the number of passengers as the independent variable and the club's revenue as the dependent variable. The number of passengers thus goes on the horizontal axis; the club's revenue from a trip goes on the vertical axis. In some cases, the variables in a graph cannot be considered independent or dependent. In those cases, the variables may be placed on either axis; we will encounter such a case in the chapter that introduces the production possibilities model. In other cases, economists simply ignore the rule; we will encounter that case in the chapter that introduces the model of demand and supply. The rule that the independent variable goes on the horizontal axis and the dependent variable goes on the vertical usually holds, but not always.

2. The point at which the axes of a graph intersect.

The point at which the axes intersect is called the **origin**² of the graph. Notice that in [Figure 21.2 "Plotting a Graph"](#) the origin has a value of zero for each variable.

In drawing a graph showing numeric values, we also need to put numbers on the axes. For the axes in Panel (a), we have chosen numbers that correspond to the values in the table. The number of passengers ranges up to 40 for a trip; club revenues from a trip range from \$200 (the payment the club receives from student government) to \$600. We have extended the vertical axis to \$800 to allow some changes we will consider below. We have chosen intervals of 10 passengers on the horizontal axis and \$100 on the vertical axis. The choice of particular intervals is mainly a matter of convenience in drawing and reading the graph; we have chosen the ones here because they correspond to the intervals given in the table.

We have drawn vertical lines from each of the values on the horizontal axis and horizontal lines from each of the values on the vertical axis. These lines, called gridlines, will help us in Step 2.

Step 2. Plot the Points

Each of the rows in the table in [Figure 21.1 "Ski Club Revenues"](#) gives a combination of the number of passengers on the bus and club revenue from a particular trip. We can plot these values in our graph.

We begin with the first row, A, corresponding to zero passengers and club revenue of \$200, the payment from student government. We read up from zero passengers on the horizontal axis to \$200 on the vertical axis and mark point A. This point shows that zero passengers result in club revenues of \$200.

The second combination, B, tells us that if 10 passengers ride the bus, the club receives \$300 in revenue from the trip—\$100 from the \$10-per-passenger charge plus the \$200 from student government. We start at 10 passengers on the horizontal axis and follow the gridline up. When we travel up in a graph, we are traveling with respect to values on the vertical axis. We travel up by \$300 and mark point B.

Points in a graph have a special significance. They relate the values of the variables on the two axes to each other. Reading to the left from point B, we see that it shows \$300 in club revenue. Reading down from point B, we see that it shows 10 passengers. Those values are, of course, the values given for combination B in the table.

We repeat this process to obtain points C, D, and E. Check to be sure that you see that each point corresponds to the values of the two variables given in the corresponding row of the table.

The graph in Panel (b) is called a scatter diagram. A **scatter diagram**³ shows individual points relating values of the variable on one axis to values of the variable on the other.

Step 3. Draw the Curve

The final step is to draw the curve that shows the relationship between the number of passengers who ride the bus and the club’s revenues from the trip. The term “curve” is used for any line in a graph that shows a relationship between two variables.

We draw a line that passes through points A through E. Our curve shows club revenues; we shall call it R_1 . Notice that R_1 is an upward-sloping straight line. Notice also that R_1 intersects the vertical axis at \$200 (point A). The point at which a curve intersects an axis is called the **intercept**⁴ of the curve. We often refer to the vertical or horizontal intercept of a curve; such intercepts can play a special role in economic analysis. The vertical intercept in this case shows the revenue the club would receive on a day it offered the trip and no one rode the bus.

To check your understanding of these steps, we recommend that you try plotting the points and drawing R_1 for yourself in Panel (a). Better yet, draw the axes for yourself on a sheet of graph paper and plot the curve.

The Slope of a Curve

In this section, we will see how to compute the slope of a curve. The slopes of curves tell an important story: they show the rate at which one variable changes with respect to another.

The **slope**⁵ of a curve equals the ratio of the change in the value of the variable on the vertical axis to the change in the value of the variable on the horizontal axis, measured between two points on the curve. You may have heard this called “the rise over the run.” In equation form, we can write the definition of the slope as

Equation 21.1

$$\text{Slope} = \frac{\text{vertical change}}{\text{horizontal change}}$$

3. A graph that shows individual points relating values of the variable on one axis to values of the variable on the other.

4. The point at which a curve intersects an axis.

5. The ratio of the change in the value of the variable on the vertical axis to the change in the value of the variable on the horizontal axis measured between two points on the curve.

Equation 21.1 is the first equation in this text. Figure 21.3 "Reading and Using Equations" provides a short review of working with equations. The material in this text relies much more heavily on graphs than on equations, but we will use equations from time to time. It is important that you understand how to use them.

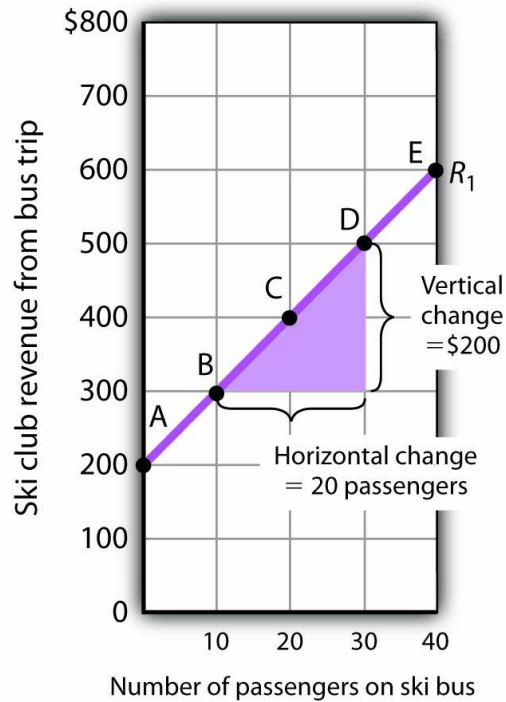
Figure 21.3 Reading and Using Equations

$$\text{Slope} = \frac{\text{vertical change}}{\text{horizontal change}}$$

Many equations in economics begin in the form of Equation 21.1, with the statement that one thing (in this case the slope) equals another (the vertical change divided by the horizontal change). In this example, the equation is written in words. Sometimes we use symbols in place of words. The basic idea though, is always the same: the term represented on the left side of the equals sign equals the term on the right side. In Equation 21.1 there are three variables: the slope, the vertical change, and the horizontal change. If we know the values of two of the three, we can compute the third. In the computation of slopes that follow, for example, we will use values for the two variables on the right side of the equation to compute the slope.

Figure 21.4 "Computing the Slope of a Curve" shows R_1 and the computation of its slope between points B and D. Point B corresponds to 10 passengers on the bus; point D corresponds to 30. The change in the horizontal axis when we go from B to D thus equals 20 passengers. Point B corresponds to club revenues of \$300; point D corresponds to club revenues of \$500. The change in the vertical axis equals \$200. The slope thus equals \$200/20 passengers, or \$10/passenger.

Figure 21.4 Computing the Slope of a Curve



$$\text{Slope} = \frac{\text{vertical change}}{\text{horizontal change}} = \frac{\$200}{20 \text{ passengers}} = \$10/\text{passenger}$$

1. Select two points; we have selected points B and D.
2. The slope equals the vertical change divided by the horizontal change between the two points.
3. Between points B and D, the slope equals $\$200/20 \text{ passengers} = \$10/\text{passenger}$.
4. The slope of this curve is the price per passenger. The fact that it is positive suggests a positive relationship between revenue per trip and the number of passengers riding the bus. Because the slope of this curve is $\$10/\text{passenger}$ between any two points on the curve, the relationship between club revenue per trip and the number of passengers is linear.

We have applied the definition of the slope of a curve to compute the slope of R_1 between points B and D. That same definition is given in [Equation 21.1](#). Applying the equation, we have:

$$\text{Slope} = \frac{\text{vertical change}}{\text{horizontal change}} = \frac{\$200}{20 \text{ passengers}} = \$10/\text{passenger}$$

The slope of this curve tells us the amount by which revenues rise with an increase in the number of passengers. It should come as no surprise that this amount equals the price per passenger. Adding a passenger adds \$10 to the club's revenues.

Notice that we can compute the slope of R_1 between any two points on the curve and get the same value; the slope is constant. Consider, for example, points A and E. The vertical change between these points is \$400 (we go from revenues of \$200 at A to revenues of \$600 at E). The horizontal change is 40 passengers (from zero passengers at A to 40 at E). The slope between A and E thus equals $\$400/(40 \text{ passengers}) = \$10/\text{passenger}$. We get the same slope regardless of which pair of points we pick on R_1 to compute the slope. The slope of R_1 can be considered a constant, which suggests that it is a straight line. When the curve showing the relationship between two variables has a constant slope, we say there is a **linear relationship**⁶ between the variables. A **linear curve**⁷ is a curve with constant slope.

The fact that the slope of our curve equals \$10/passenger tells us something else about the curve—\$10/passenger is a positive, not a negative, value. A curve whose slope is positive is upward sloping. As we travel up and to the right along R_1 , we travel in the direction of increasing values for both variables. A **positive relationship**⁸ between two variables is one in which both variables move in the same direction. Positive relationships are sometimes called direct relationships. There is a positive relationship between club revenues and passengers on the bus. We will look at a graph showing a negative relationship between two variables in the next section.

A Graph Showing a Negative Relationship

6. Relationship that exists between two variables when the curve between them has a constant slope.

7. A curve with constant slope.

8. Relationship that exists between two variables when both variables move in the same direction.

9. Relationship that exists between two variables when the variables move in opposite directions.

A **negative relationship**⁹ is one in which two variables move in opposite directions. A negative relationship is sometimes called an inverse relationship. The slope of a curve describing a negative relationship is always negative. A curve with a negative slope is always downward sloping.

As an example of a graph of a negative relationship, let us look at the impact of the cancellation of games by the National Basketball Association during the 1998–1999 labor dispute on the earnings of one player: Shaquille O'Neal. During the 1998–1999 season, O'Neal was the center for the Los Angeles Lakers.

O’Neal’s salary with the Lakers in 1998–1999 would have been about \$17,220,000 had the 82 scheduled games of the regular season been played. But a contract dispute between owners and players resulted in the cancellation of 32 games. Mr. O’Neal’s salary worked out to roughly \$210,000 per game, so the labor dispute cost him well over \$6 million. Presumably, he was able to eke out a living on his lower income, but the cancellation of games cost him a great deal.

We show the relationship between the number of games canceled and O’Neal’s 1998–1999 basketball earnings graphically in **Figure 21.5 "Canceling Games and Reducing Shaquille O’Neal’s Earnings"**. Canceling games reduced his earnings, so the number of games canceled is the independent variable and goes on the horizontal axis. O’Neal’s earnings are the dependent variable and go on the vertical axis. The graph assumes that his earnings would have been \$17,220,000 had no games been canceled (point A, the vertical intercept). Assuming that his earnings fell by \$210,000 per game canceled, his earnings for the season were reduced to \$10,500,000 by the cancellation of 32 games (point B). We can draw a line between these two points to show the relationship between games canceled and O’Neal’s 1998–1999 earnings from basketball. In this graph, we have inserted a break in the vertical axis near the origin. This allows us to expand the scale of the axis over the range from \$10,000,000 to \$18,000,000. It also prevents a large blank space between the origin and an income of \$10,500,000—there are no values below this amount.

What is the slope of the curve in **Figure 21.5 "Canceling Games and Reducing Shaquille O’Neal’s Earnings"**? We have data for two points, A and B. At A, O’Neal’s basketball salary would have been \$17,220,000. At B, it is \$10,500,000. The vertical change between points A and B equals $-\$6,720,000$. The change in the horizontal axis is from zero games canceled at A to 32 games canceled at B. The slope is thus

Figure 21.5 *Canceling Games and Reducing Shaquille O’Neal’s Earnings*



If no games had been canceled during the 1998–1999 basketball season, Shaquille O’Neal would have earned \$17,220,000 (point A). Assuming that his salary for the season fell by \$210,000 for each game canceled, the cancellation of 32 games during

the dispute between NBA players and owners reduced O'Neal's earnings to \$10,500,000 (point B).

$$\text{Slope} = \frac{\text{vertical change}}{\text{horizontal change}} = \frac{-\$6,720,000}{32 \text{ games}} = -\$210,000/\text{game}$$

Notice that this time the slope is negative, hence the downward-sloping curve. As we travel down and to the right along the curve, the number of games canceled rises and O'Neal's salary falls. In this case, the slope tells us the rate at which O'Neal lost income as games were canceled.

The slope of O'Neal's salary curve is also constant. That means there was a linear relationship between games canceled and his 1998–1999 basketball earnings.

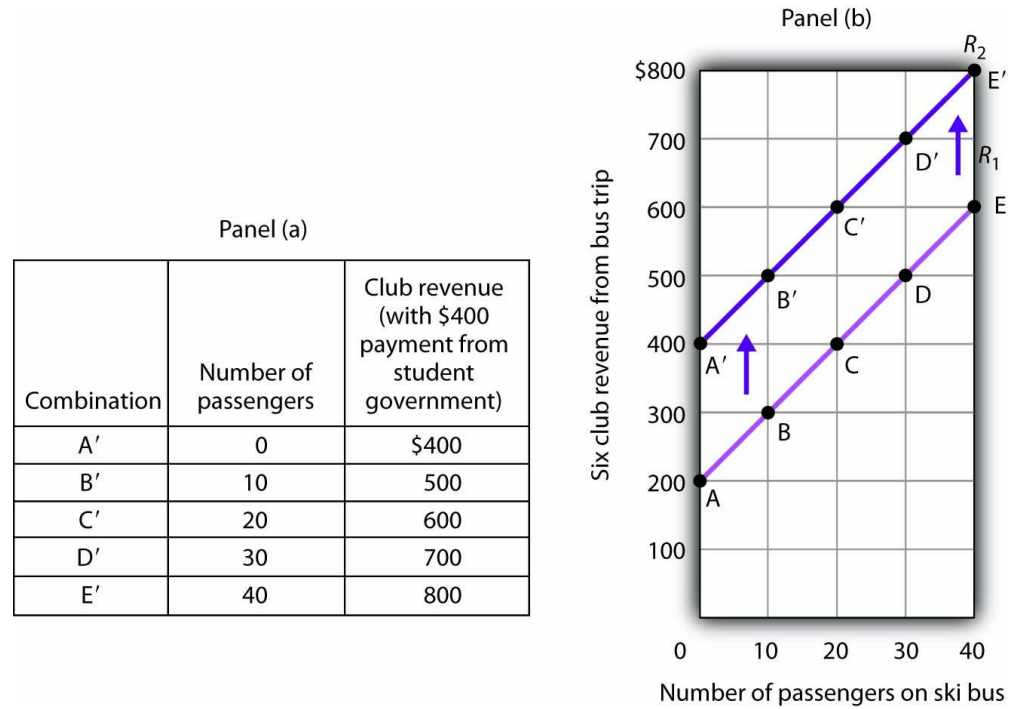
Shifting a Curve

When we draw a graph showing the relationship between two variables, we make an important assumption. We assume that all other variables that might affect the relationship between the variables in our graph are unchanged. When one of those other variables changes, the relationship changes, and the curve showing that relationship shifts.

Consider, for example, the ski club that sponsors bus trips to the ski area. The graph we drew in [Figure 21.2 "Plotting a Graph"](#) shows the relationship between club revenues from a particular trip and the number of passengers on that trip, assuming that all other variables that might affect club revenues are unchanged. Let us change one. Suppose the school's student government increases the payment it makes to the club to \$400 for each day the trip is available. The payment was \$200 when we drew the original graph. Panel (a) of [Figure 21.6 "Shifting a Curve: An Increase in Revenues"](#) shows how the increase in the payment affects the table we had in [Figure 21.1 "Ski Club Revenues"](#); Panel (b) shows how the curve shifts. Each of the new observations in the table has been labeled with a prime: A', B', etc. The curve R_1 shifts upward by \$200 as a result of the increased payment. A **shift in a curve**¹⁰ implies new values of one variable at each value of the other variable. The new curve is labeled R_2 . With 10 passengers, for example, the club's revenue was \$300 at point B on R_1 . With the increased payment from the student government, its revenue with 10 passengers rises to \$500 at point B' on R_2 . We have a shift in the curve.

10. Change in the graph of a relationship between two variables that implies new values of one variable at each value of the other variable.

Figure 21.6 *Shifting a Curve: An Increase in Revenues*



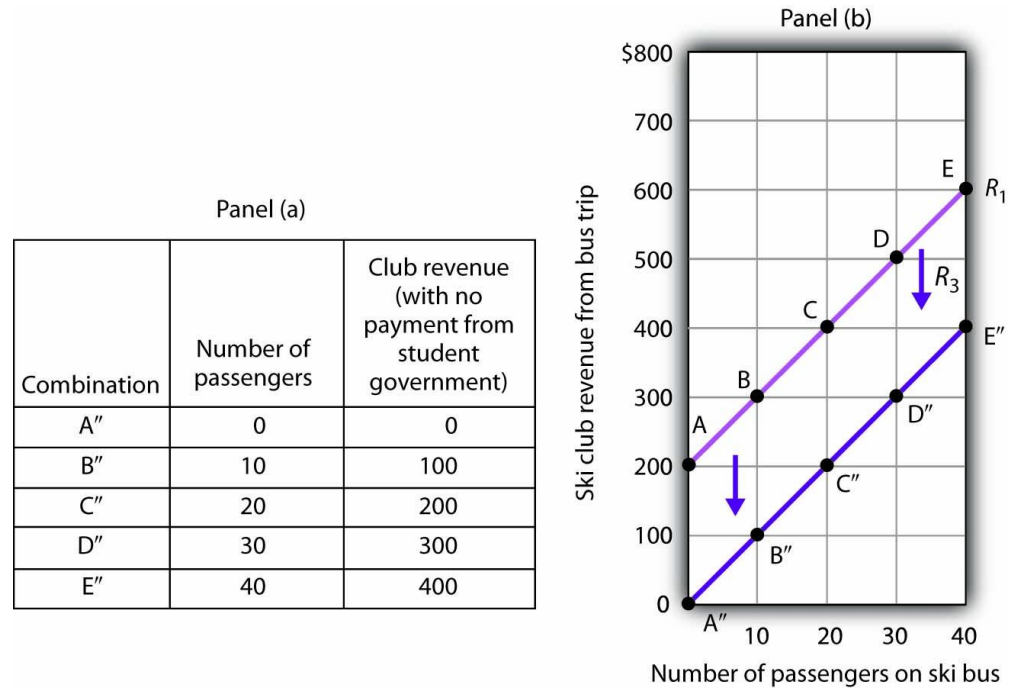
The table in Panel (a) shows the new level of revenues the ski club receives with varying numbers of passengers as a result of the increased payment from student government. The new curve is shown in dark purple in Panel (b). The old curve is shown in light purple.

It is important to distinguish between shifts in curves and movements along curves. A **movement along a curve**¹¹ is a change from one point on the curve to another that occurs when the dependent variable changes in response to a change in the independent variable. If, for example, the student government is paying the club \$400 each day it makes the ski bus available and 20 passengers ride the bus, the club is operating at point C' on R₂. If the number of passengers increases to 30, the club will be at point D' on the curve. This is a movement along a curve; the curve itself does not shift.

Now suppose that, instead of increasing its payment, the student government eliminates its payments to the ski club for bus trips. The club's only revenue from a trip now comes from its \$10/passenger charge. We have again changed one of the variables we were holding unchanged, so we get another shift in our revenue curve. The table in Panel (a) of [Figure 21.7 "Shifting a Curve: A Reduction in Revenues"](#) shows how the reduction in the student government's payment affects club revenues. The new values are shown as combinations A'' through E'' on the new curve, R₃, in Panel (b). Once again we have a shift in a curve, this time from R₁ to R₃.

11. Change from one point on the curve to another that occurs when the dependent variable changes in response to a change in the independent variable.

Figure 21.7 *Shifting a Curve: A Reduction in Revenues*



The table in Panel (a) shows the impact on ski club revenues of an elimination of support from the student government for ski bus trips. The club's only revenue now comes from the \$10 it charges to each passenger. The new combinations are shown as A'' - E''. In Panel (b) we see that the original curve relating club revenue to the number of passengers has shifted down.

The shifts in [Figure 21.6 "Shifting a Curve: An Increase in Revenues"](#) and [Figure 21.7 "Shifting a Curve: A Reduction in Revenues"](#) left the slopes of the revenue curves unchanged. That is because the slope in all these cases equals the price per ticket, and the ticket price remains unchanged. Next, we shall see how the slope of a curve changes when we rotate it about a single point.

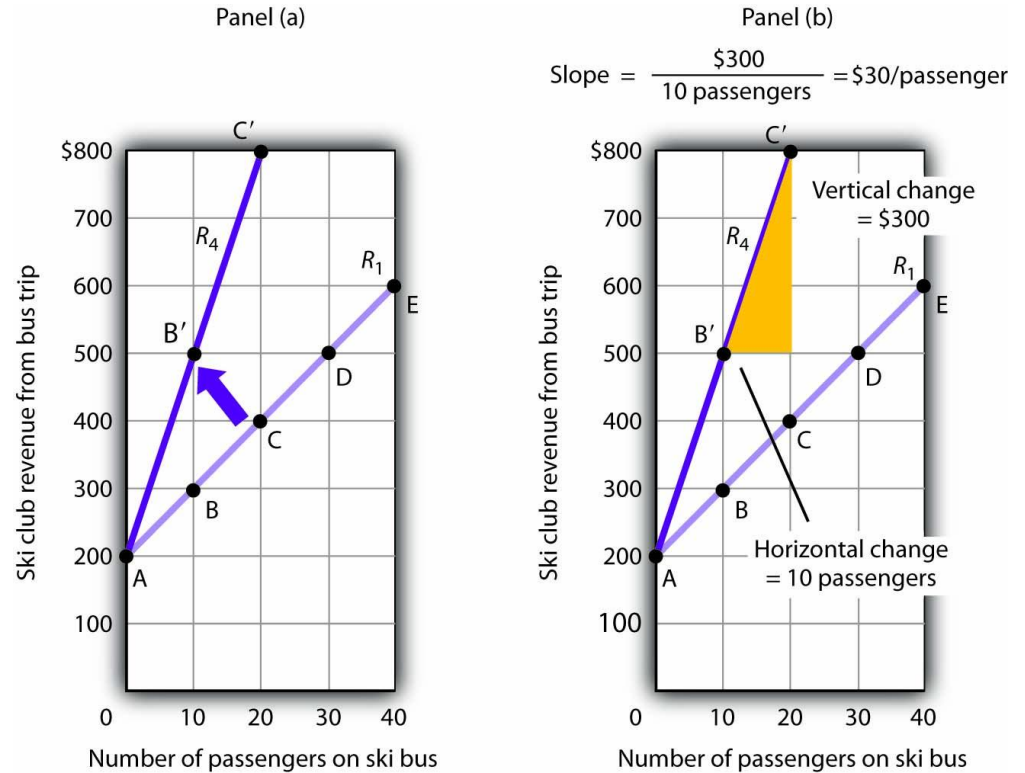
Rotating a Curve

A **rotation of a curve**¹² occurs when we change its slope, with one point on the curve fixed. Suppose, for example, the ski club changes the price of its bus rides to the ski area to \$30 per trip, and the payment from the student government remains \$200 for each day the trip is available. This means the club's revenues will remain \$200 if it has no passengers on a particular trip. Revenue will, however, be different when the club has passengers. Because the slope of our revenue curve equals the price per ticket, the slope of the revenue curve changes.

12. Change in a curve that occurs when its slope changes with one point on the curve fixed.

Panel (a) of [Figure 21.8 "Rotating a Curve"](#) shows what happens to the original revenue curve, R_1 , when the price per ticket is raised. Point A does not change; the club's revenue with zero passengers is unchanged. But with 10 passengers, the club's revenue would rise from \$300 (point B on R_1) to \$500 (point B' on R_4). With 20 passengers, the club's revenue will now equal \$800 (point C' on R_4).

Figure 21.8 Rotating a Curve



A curve is said to rotate when a single point remains fixed while other points on the curve move; a rotation always changes the slope of a curve. Here an increase in the price per passenger to \$30 would rotate the revenue curve from R_1 to R_4 in Panel (a). The slope of R_4 is \$30 per passenger.

The new revenue curve R_4 is steeper than the original curve. Panel (b) shows the computation of the slope of the new curve between points B' and C'. The slope increases to \$30 per passenger—the new price of a ticket. The greater the slope of a positively sloped curve, the steeper it will be.

We have now seen how to draw a graph of a curve, how to compute its slope, and how to shift and rotate a curve. We have examined both positive and negative

relationships. Our work so far has been with linear relationships. Next we will turn to nonlinear ones.

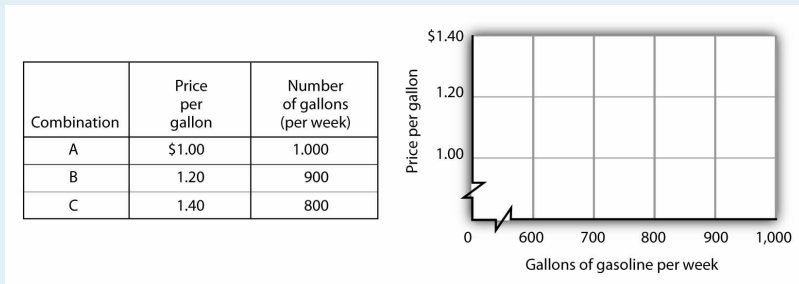
KEY TAKEAWAYS

- A graph shows a relationship between two or more variables.
- An upward-sloping curve suggests a positive relationship between two variables. A downward-sloping curve suggests a negative relationship between two variables.
- The slope of a curve is the ratio of the vertical change to the horizontal change between two points on the curve. A curve whose slope is constant suggests a linear relationship between two variables.
- A change from one point on the curve to another produces a movement along the curve in the graph. A shift in the curve implies new values of one variable at each value of the other variable. A rotation in the curve implies that one point remains fixed while the slope of the curve changes.

TRY IT!

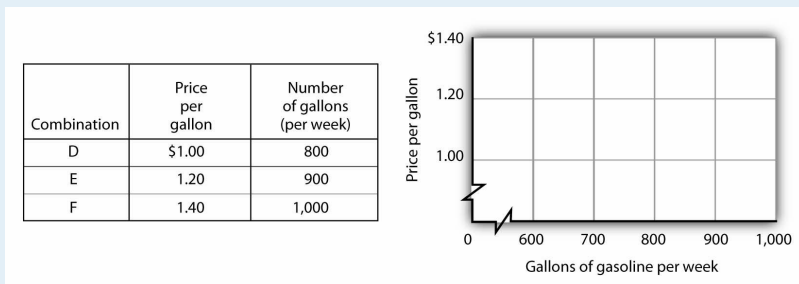
The following table shows the relationship between the number of gallons of gasoline people in a community are willing and able to buy per week and the price per gallon. Plot these points in the grid provided and label each point with the letter associated with the combination. Notice that there are breaks in both the vertical and horizontal axes of the grid. Draw a line through the points you have plotted. Does your graph suggest a positive or a negative relationship? What is the slope between A and B? Between B and C? Between A and C? Is the relationship linear?

Figure 21.9



Now suppose you are given the following information about the relationship between price per gallon and the number of gallons per week gas stations in the community are willing to sell.

Figure 21.10



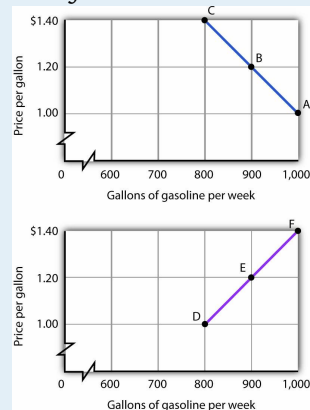
Plot these points in the grid provided and draw a curve through the points you have drawn. Does your graph suggest a positive or a negative relationship? What is the slope between D and E? Between E and F? Between D and F? Is this relationship linear?

ANSWER TO TRY IT!

Here is the first graph. The curve's downward slope tells us there is a negative relationship between price and the quantity of gasoline people are willing and able to buy. This curve, by the way, is a demand curve (the next one is a supply curve). We will study demand and supply soon; you will be using these curves a great deal. The slope between A and B is -0.002 (slope = vertical change/horizontal change = $-0.20/100$). The slope between B and C and between A and C is the same. That tells us the curve is linear, which, of course, we can see—it is a straight line.

Here is the supply curve. Its upward slope tells us there is a positive relationship between price per gallon and the number of gallons per week gas stations are willing to sell. The slope between D and E is 0.002 (slope equals vertical change/horizontal change = $0.20/100$). Because the curve is linear, the slope is the same between any two points, for example, between E and F and between D and F.

Figure 21.11



21.2 Nonlinear Relationships and Graphs without Numbers

LEARNING OBJECTIVES

1. Understand nonlinear relationships and how they are illustrated with nonlinear curves.
2. Explain how to estimate the slope at any point on a nonlinear curve.
3. Explain how graphs without numbers can be used to understand the nature of relationships between two variables.

In this section we will extend our analysis of graphs in two ways: first, we will explore the nature of nonlinear relationships; then we will have a look at graphs drawn without numbers.

Graphs of Nonlinear Relationships

In the graphs we have examined so far, adding a unit to the independent variable on the horizontal axis always has the same effect on the dependent variable on the vertical axis. When we add a passenger riding the ski bus, the ski club's revenues always rise by the price of a ticket. The cancellation of one more game in the 1998–1999 basketball season would always reduce Shaquille O'Neal's earnings by \$210,000. The slopes of the curves describing the relationships we have been discussing were constant; the relationships were linear.

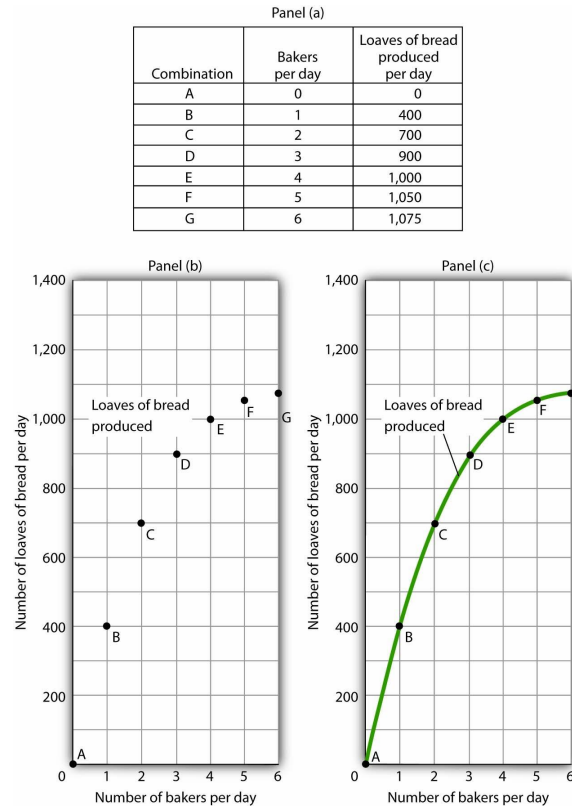
Many relationships in economics are nonlinear. A **nonlinear relationship**¹³ between two variables is one for which the slope of the curve showing the relationship changes as the value of one of the variables changes. A **nonlinear curve**¹⁴ is a curve whose slope changes as the value of one of the variables changes.

Consider an example. Suppose Felicia Alvarez, the owner of a bakery, has recorded the relationship between her firm's daily output of bread and the number of bakers she employs. The relationship she has recorded is given in the table in Panel (a) of [Figure 21.12 "A Nonlinear Curve"](#). The corresponding points are plotted in Panel (b). Clearly, we cannot draw a straight line through these points. Instead, we shall have to draw a nonlinear curve like the one shown in Panel (c).

13. Relationship between two variables in which the slope of the curve showing the relationship changes as the value of one of the variables changes.

14. A curve whose slope changes as the value of one of the variables changes.

Figure 21.12 A Nonlinear Curve



The table in Panel (a) shows the relationship between the number of bakers Felicia Alvarez employs per day and the number of loaves of bread produced per day. This information is plotted in Panel (b). This is a nonlinear relationship; the curve connecting these points in Panel (c) (Loaves of bread produced) has a changing slope.

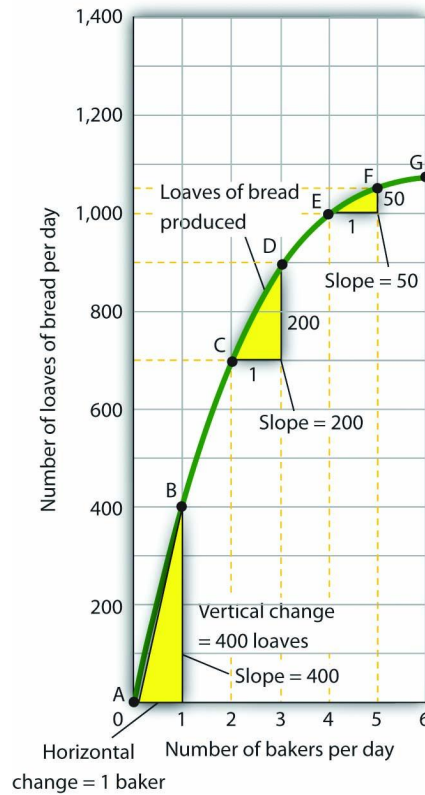
Inspecting the curve for loaves of bread produced, we see that it is upward sloping, suggesting a positive relationship between the number of bakers and the output of bread. But we also see that the curve becomes flatter as we travel up and to the right along it; it is nonlinear and describes a nonlinear relationship.

How can we estimate the slope of a nonlinear curve? After all, the slope of such a curve changes as we travel along it. We can deal with this problem in two ways. One is to consider two points on the curve and to compute the slope between those two points. Another is to compute the slope of the curve at a single point.

When we compute the slope of a curve between two points, we are really computing the slope of a straight line drawn between those two points. In [Figure 21.13 "Estimating Slopes for a Nonlinear Curve"](#), we have computed slopes between pairs of points A and B, C and D, and E and F on our curve for loaves of bread produced.

These slopes equal 400 loaves/baker, 200 loaves/baker, and 50 loaves/baker, respectively. They are the slopes of the dashed-line segments shown. These dashed segments lie close to the curve, but they clearly are not on the curve. After all, the dashed segments are straight lines. Our curve relating the number of bakers to daily bread production is not a straight line; the relationship between the bakery's daily output of bread and the number of bakers is nonlinear.

Figure 21.13 Estimating Slopes for a Nonlinear Curve



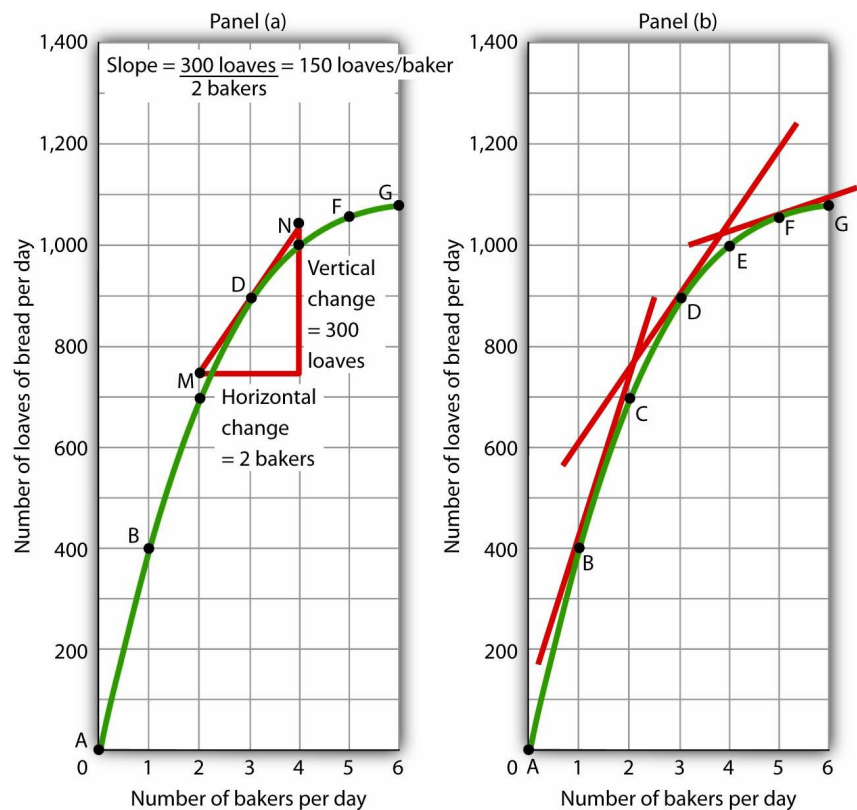
We can estimate the slope of a nonlinear curve between two points. Here, slopes are computed between points A and B, C and D, and E and F. When we compute the slope of a nonlinear curve between two points, we are computing the slope of a straight line between those two points. Here the lines whose slopes are computed are the dashed lines between the pairs of points.

Every point on a nonlinear curve has a different slope. To get a precise measure of the slope of such a curve, we need to consider its slope at a single point. To do that, we draw a line tangent to the curve at that point. A **tangent line**¹⁵ is a straight line that touches, but does not intersect, a nonlinear curve at only one point. The slope of a tangent line equals the slope of the curve at the point at which the tangent line touches the curve.

15. A straight line that touches, but does not intersect, a nonlinear curve at only one point.

Consider point D in Panel (a) of [Figure 21.14 "Tangent Lines and the Slopes of Nonlinear Curves"](#). We have drawn a tangent line that just touches the curve showing bread production at this point. It passes through points labeled M and N. The vertical change between these points equals 300 loaves of bread; the horizontal change equals two bakers. The slope of the tangent line equals 150 loaves of bread/baker (300 loaves/2 bakers). The slope of our bread production curve at point D equals the slope of the line tangent to the curve at this point. In Panel (b), we have sketched lines tangent to the curve for loaves of bread produced at points B, D, and F. Notice that these tangent lines get successively flatter, suggesting again that the slope of the curve is falling as we travel up and to the right along it.

Figure 21.14 Tangent Lines and the Slopes of Nonlinear Curves



Because the slope of a nonlinear curve is different at every point on the curve, the precise way to compute slope is to draw a tangent line; the slope of the tangent line equals the slope of the curve at the point the tangent line touches the curve. In Panel (a), the slope of the tangent line is computed for us: it equals 150 loaves/baker. Generally, we will not have the information to compute slopes of tangent lines. We will use them as in Panel (b), to observe what happens to the slope of a nonlinear curve as we travel along it. We see here that the slope falls (the tangent lines become flatter) as the number of bakers rises.

Notice that we have not been given the information we need to compute the slopes of the tangent lines that touch the curve for loaves of bread produced at points B and F. In this text, we will not have occasion to compute the slopes of tangent lines. Either they will be given or we will use them as we did here—to see what is happening to the slopes of nonlinear curves.

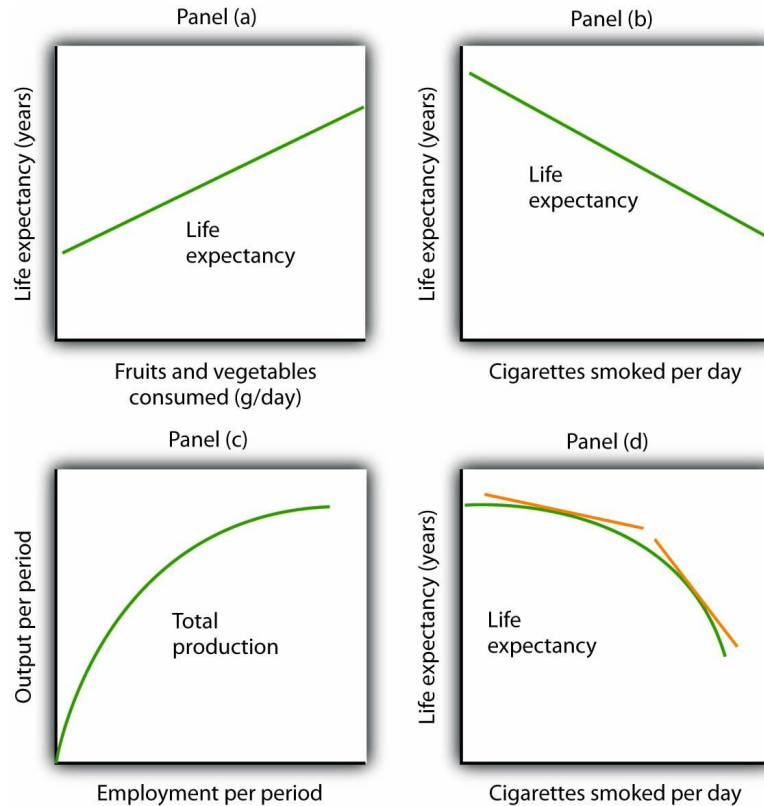
In the case of our curve for loaves of bread produced, the fact that the slope of the curve falls as we increase the number of bakers suggests a phenomenon that plays a central role in both microeconomic and macroeconomic analysis. As we add workers (in this case bakers), output (in this case loaves of bread) rises, but by smaller and smaller amounts. Another way to describe the relationship between the number of workers and the quantity of bread produced is to say that as the number of workers increases, the output increases at a decreasing rate. In Panel (b) of [Figure 21.14 "Tangent Lines and the Slopes of Nonlinear Curves"](#) we express this idea with a graph, and we can gain this understanding by looking at the tangent lines, even though we do not have specific numbers. Indeed, much of our work with graphs will not require numbers at all.

We turn next to look at how we can use graphs to express ideas even when we do not have specific numbers.

Graphs Without Numbers

We know that a positive relationship between two variables can be shown with an upward-sloping curve in a graph. A negative or inverse relationship can be shown with a downward-sloping curve. Some relationships are linear and some are nonlinear. We illustrate a linear relationship with a curve whose slope is constant; a nonlinear relationship is illustrated with a curve whose slope changes. Using these basic ideas, we can illustrate hypotheses graphically even in cases in which we do not have numbers with which to locate specific points.

Consider first a hypothesis suggested by recent medical research: eating more fruits and vegetables each day increases life expectancy. We can show this idea graphically. Daily fruit and vegetable consumption (measured, say, in grams per day) is the independent variable; life expectancy (measured in years) is the dependent variable. Panel (a) of [Figure 21.15 "Graphs Without Numbers"](#) shows the hypothesis, which suggests a positive relationship between the two variables. Notice the vertical intercept on the curve we have drawn; it implies that even people who eat no fruit or vegetables can expect to live at least a while!

Figure 21.15 *Graphs Without Numbers*

We often use graphs without numbers to suggest the nature of relationships between variables. The graphs in the four panels correspond to the relationships described in the text.

Panel (b) illustrates another hypothesis we hear often: smoking cigarettes reduces life expectancy. Here the number of cigarettes smoked per day is the independent variable; life expectancy is the dependent variable. The hypothesis suggests a negative relationship. Hence, we have a downward-sloping curve.

Now consider a general form of the hypothesis suggested by the example of Felicia Alvarez's bakery: increasing employment each period increases output each period, but by smaller and smaller amounts. As we saw in [Figure 21.12 "A Nonlinear Curve"](#), this hypothesis suggests a positive, nonlinear relationship. We have drawn a curve in Panel (c) of [Figure 21.15 "Graphs Without Numbers"](#) that looks very much like the curve for bread production in [Figure 21.14 "Tangent Lines and the Slopes of Nonlinear Curves"](#). It is upward sloping, and its slope diminishes as employment rises.

Finally, consider a refined version of our smoking hypothesis. Suppose we assert that smoking cigarettes does reduce life expectancy and that increasing the number of cigarettes smoked per day reduces life expectancy by a larger and larger amount. Panel (d) shows this case. Again, our life expectancy curve slopes downward. But now it suggests that smoking only a few cigarettes per day reduces life expectancy only a little but that life expectancy falls by more and more as the number of cigarettes smoked per day increases.

We have sketched lines tangent to the curve in Panel (d). The slopes of these tangent lines are negative, suggesting the negative relationship between smoking and life expectancy. They also get steeper as the number of cigarettes smoked per day rises. Whether a curve is linear or nonlinear, a steeper curve is one for which the absolute value of the slope rises as the value of the variable on the horizontal axis rises. When we speak of the absolute value of a negative number such as -4 , we ignore the minus sign and simply say that the absolute value is 4. The absolute value of -8 , for example, is greater than the absolute value of -4 , and a curve with a slope of -8 is steeper than a curve whose slope is -4 .

Thus far our work has focused on graphs that show a relationship between variables. We turn finally to an examination of graphs and charts that show values of one or more variables, either over a period of time or at a single point in time.

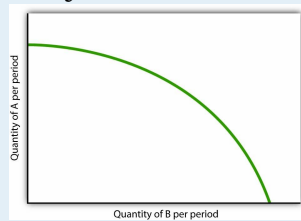
KEY TAKEAWAYS

- The slope of a nonlinear curve changes as the value of one of the variables in the relationship shown by the curve changes.
- A nonlinear curve may show a positive or a negative relationship.
- The slope of a curve showing a nonlinear relationship may be estimated by computing the slope between two points on the curve. The slope at any point on such a curve equals the slope of a line drawn tangent to the curve at that point.
- We can illustrate hypotheses about the relationship between two variables graphically, even if we are not given numbers for the relationships. We need only draw and label the axes and then draw a curve consistent with the hypothesis.

TRY IT!

Consider the following curve drawn to show the relationship between two variables, A and B (we will be using a curve like this one in the next chapter). Explain whether the relationship between the two variables is positive or negative, linear or nonlinear. Sketch two lines tangent to the curve at different points on the curve, and explain what is happening to the slope of the curve.

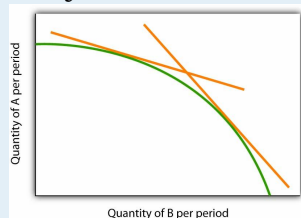
Figure 21.16



ANSWER TO TRY IT!

The relationship between variable A shown on the vertical axis and variable B shown on the horizontal axis is negative. This is sometimes referred to as an inverse relationship. Variables that give a straight line with a constant slope are said to have a linear relationship. In this case, however, the relationship is nonlinear. The slope changes all along the curve. In this case the slope becomes steeper as we move downward to the right along the curve, as shown by the two tangent lines that have been drawn. As the quantity of B increases, the quantity of A decreases at an increasing rate.

Figure 21.17



21.3 Using Graphs and Charts to Show Values of Variables

LEARNING OBJECTIVE

1. Understand and use time-series graphs, tables, pie charts, and bar charts to illustrate data and relationships among variables.

You often see pictures representing numerical information. These pictures may take the form of graphs that show how a particular variable has changed over time, or charts that show values of a particular variable at a single point in time. We will close our introduction to graphs by looking at both ways of conveying information.

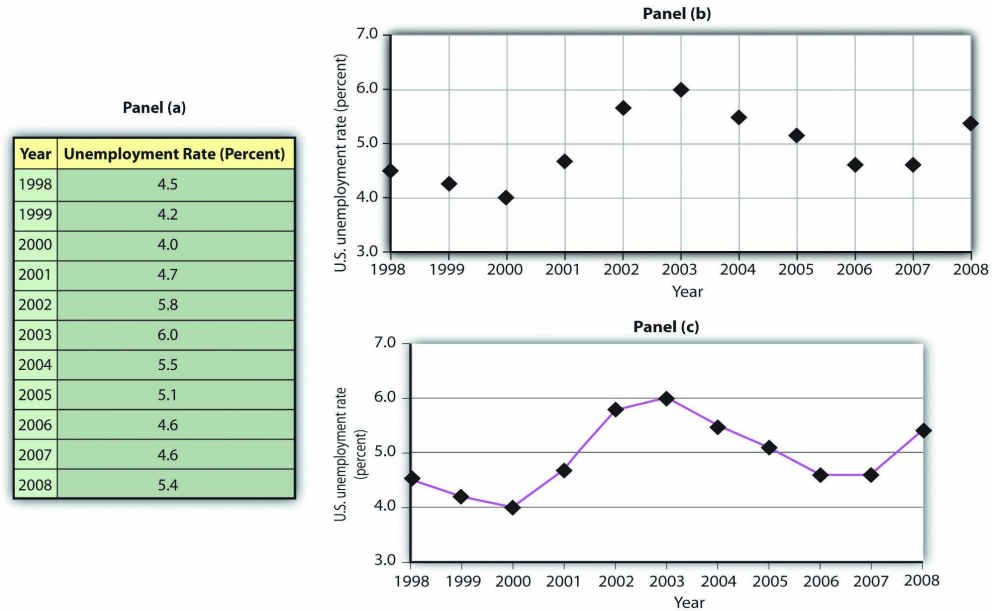
Time-Series Graphs

One of the most common types of graphs used in economics is called a time-series graph. A **time-series graph**¹⁶ shows how the value of a particular variable or variables has changed over some period of time. One of the variables in a time-series graph is time itself. Time is typically placed on the horizontal axis in time-series graphs. The other axis can represent any variable whose value changes over time.

The table in Panel (a) of [Figure 21.18 "A Time-Series Graph"](#) shows annual values of the unemployment rate, a measure of the percentage of workers who are looking for and available for work but are not working, in the United States from 1998 to 2007. The grid with which these values are plotted is given in Panel (b). Notice that the vertical axis is scaled from 3 to 8%, instead of beginning with zero. Time-series graphs are often presented with the vertical axis scaled over a certain range. The result is the same as introducing a break in the vertical axis, as we did in [Figure 21.5 "Canceling Games and Reducing Shaquille O'Neal's Earnings"](#)

16. A graph that shows how the value of a particular variable or variables has changed over some period of time.

Figure 21.18 A Time-Series Graph



Panel (a) gives values of the U.S. unemployment rate from 1998 to 2008. These points are then plotted in Panel (b). To draw a time-series graph, we connect these points, as in Panel (c).

The values for the U.S. unemployment rate are plotted in Panel (b) of [Figure 21.18 "A Time-Series Graph"](#). The points plotted are then connected with a line in Panel (c).

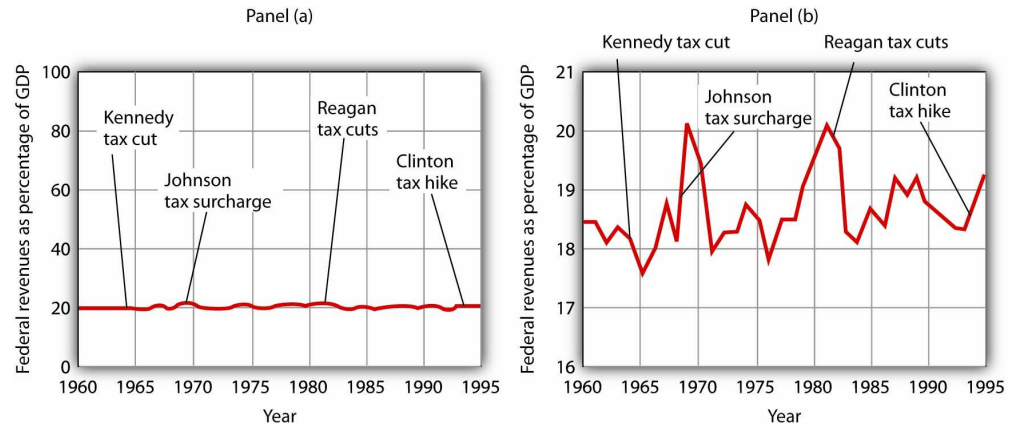
Scaling the Vertical Axis in Time-Series Graphs

The scaling of the vertical axis in time-series graphs can give very different views of economic data. We can make a variable appear to change a great deal, or almost not at all, depending on how we scale the axis. For that reason, it is important to note carefully how the vertical axis in a time-series graph is scaled.

Consider, for example, the issue of whether an increase or decrease in income tax rates has a significant effect on federal government revenues. This became a big issue in 1993, when President Clinton proposed an increase in income tax rates. The measure was intended to boost federal revenues. Critics of the president’s proposal argued that changes in tax rates have little or no effect on federal revenues. Higher tax rates, they said, would cause some people to scale back their income-earning efforts and thus produce only a small gain—or even a loss—in revenues. Op-ed essays in *The Wall Street Journal*, for example, often showed a graph very much like that presented in Panel (a) of [Figure 21.19 "Two Tales of Taxes and Income"](#). It

shows federal revenues as a percentage of gross domestic product (GDP), a measure of total income in the economy, since 1960. Various tax reductions and increases were enacted during that period, but Panel (a) appears to show they had little effect on federal revenues relative to total income.

Figure 21.19 *Two Tales of Taxes and Income*



A graph of federal revenues as a percentage of GDP emphasizes the stability of the relationship when plotted with the vertical axis scaled from 0 to 100, as in Panel (a). Scaling the vertical axis from 16 to 21%, as in Panel (b), stresses the short-term variability of the percentage and suggests that major tax rate changes have affected federal revenues.

Laura Tyson, then President Clinton’s chief economic adviser, charged that those graphs were misleading. In a *Wall Street Journal* piece, she noted the scaling of the vertical axis used by the president’s critics. She argued that a more reasonable scaling of the axis shows that federal revenues tend to increase relative to total income in the economy and that cuts in taxes reduce the federal government’s share. Her alternative version of these events does, indeed, suggest that federal receipts have tended to rise and fall with changes in tax policy, as shown in Panel (b) of [Figure 21.19 "Two Tales of Taxes and Income"](#).

Which version is correct? Both are. Both graphs show the same data. It is certainly true that federal revenues, relative to economic activity, have been remarkably stable over the past several decades, as emphasized by the scaling in Panel (a). But it is also true that the federal share has varied between about 17 and 20%. And a small change in the federal share translates into a large amount of tax revenue.

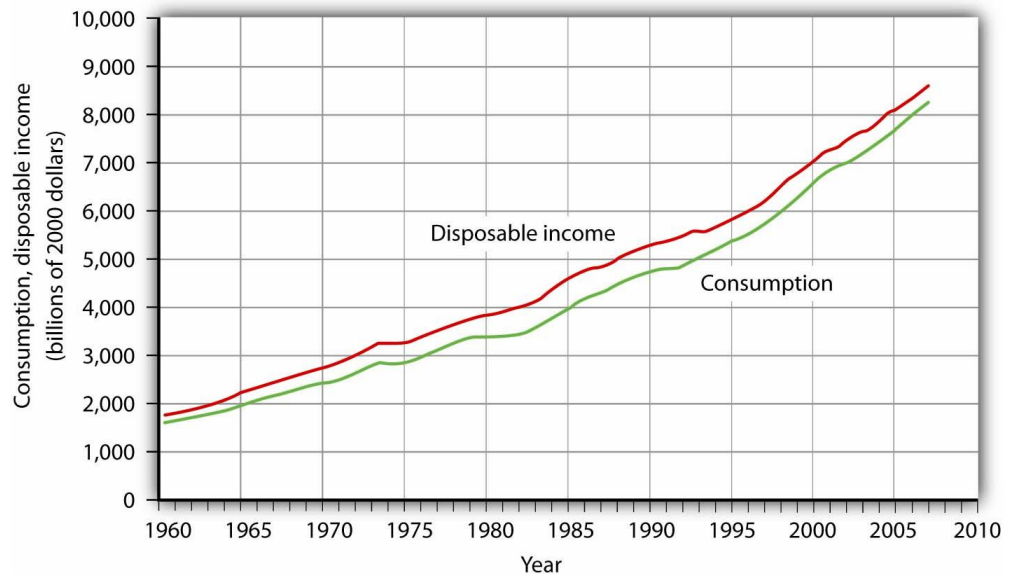
It is easy to be misled by time-series graphs. Large changes can be made to appear trivial and trivial changes to appear large through an artful scaling of the axes. The best advice for a careful consumer of graphical information is to note carefully the

range of values shown and then to decide whether the changes are really significant.

Testing Hypotheses with Time-Series Graphs

John Maynard Keynes, one of the most famous economists ever, proposed in 1936 a hypothesis about total spending for consumer goods in the economy. He suggested that this spending was positively related to the income households receive. One way to test such a hypothesis is to draw a time-series graph of both variables to see whether they do, in fact, tend to move together. **Figure 21.20 "A Time-Series Graph of Disposable Income and Consumption"** shows the values of consumption spending and disposable income, which is after-tax income received by households. Annual values of consumption and disposable income are plotted for the period 1960–2007. Notice that both variables have tended to move quite closely together. The close relationship between consumption and disposable income is consistent with Keynes’s hypothesis that there is a positive relationship between the two variables.

Figure 21.20 A Time-Series Graph of Disposable Income and Consumption



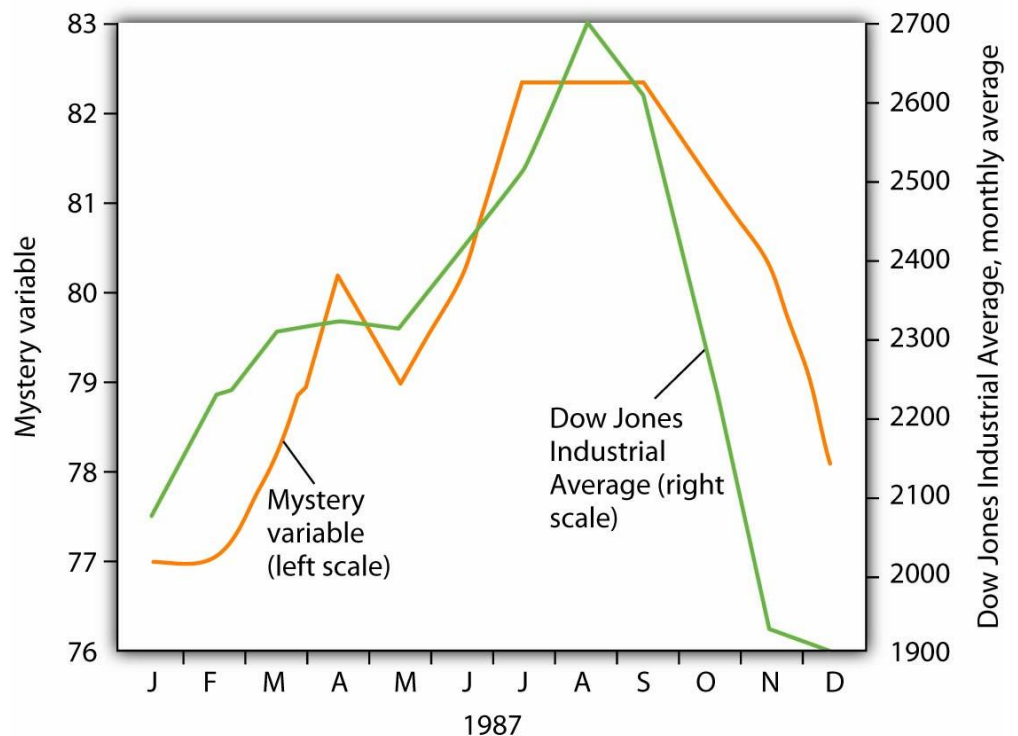
Plotted in a time-series graph, disposable income and consumption appear to move together. This is consistent with the hypothesis that the two are directly related.

Source: Department of Commerce

The fact that two variables tend to move together in a time series does not by itself prove that there is a systematic relationship between the two. **Figure 21.21 "Stock**

Prices and a Mystery Variable shows a time-series graph of monthly values in 1987 of the Dow Jones Industrial Average, an index that reflects the movement of the prices of common stock. Notice the steep decline in the index beginning in October, not unlike the steep decline in October 2008.

Figure 21.21 *Stock Prices and a Mystery Variable*



The movement of the monthly average of the Dow Jones Industrial Average, a widely reported index of stock values, corresponded closely to changes in a mystery variable, X. Did the mystery variable contribute to the crash?

It would be useful, and certainly profitable, to be able to predict such declines. **Figure 21.21 "Stock Prices and a Mystery Variable"** also shows the movement of monthly values of a “mystery variable,” X, for the same period. The mystery variable and stock prices appear to move closely together. Was the plunge in the mystery variable in October responsible for the stock crash? The answer is: Not likely. The mystery value is monthly average temperatures in San Juan, Puerto Rico. Attributing the stock crash in 1987 to the weather in San Juan would be an example of the fallacy of false cause.

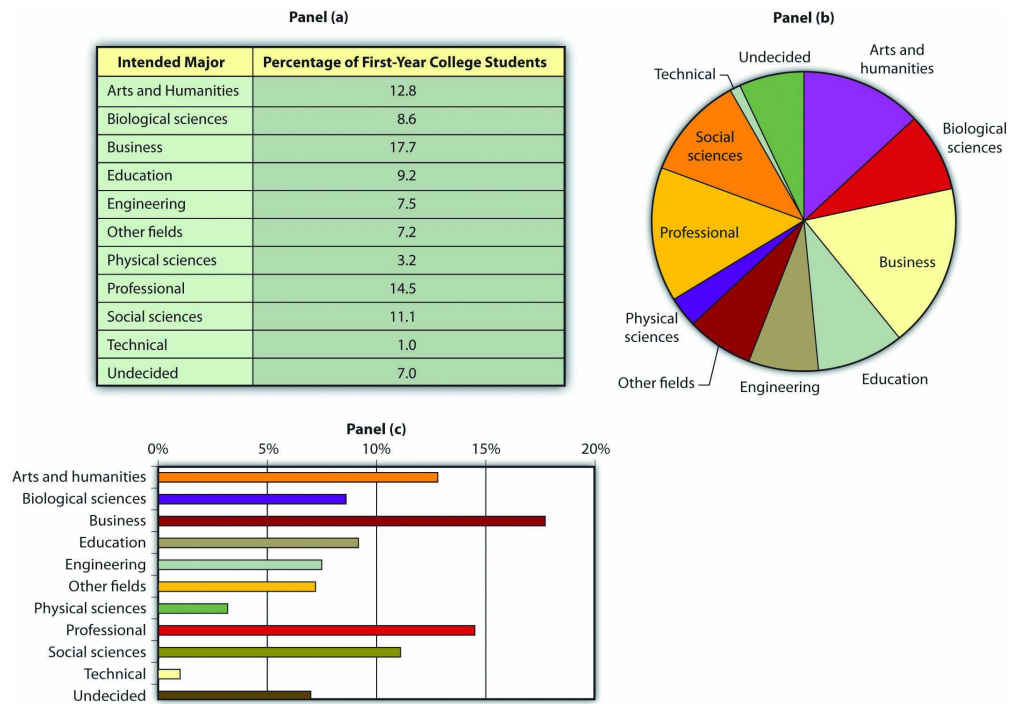
Notice that **Figure 21.21 "Stock Prices and a Mystery Variable"** has two vertical axes. The left-hand axis shows values of temperature; the right-hand axis shows

values for the Dow Jones Industrial Average. Two axes are used here because the two variables, San Juan temperature and the Dow Jones Industrial Average, are scaled in different units.

Descriptive Charts

We can use a table to show data. Consider, for example, the information compiled each year by the Higher Education Research Institute (HERI) at UCLA. HERI conducts a survey of first-year college students throughout the United States and asks what their intended academic majors are. The table in Panel (a) of [Figure 21.22](#) "Intended Academic Major Area, 2007 Survey of First-Year College Students" shows the results of the 2007 survey. In the groupings given, economics is included among the social sciences.

Figure 21.22 *Intended Academic Major Area, 2007 Survey of First-Year College Students*



Panels (a), (b), and (c) show the results of a 2007 survey of first-year college students in which respondents were asked to state their intended academic major. All three panels present the same information. Panel (a) is an example of a table, Panel (b) is an example of a pie chart, and Panel (c) is an example of a horizontal bar chart.

Source: Higher Education Research Institute, 2007 Freshman Survey. Percentages shown are for broad academic areas, each of which includes several majors. For example, the social sciences include such majors as economics, political science, and sociology; business includes such majors as accounting, finance, and marketing; technical majors include electronics, data processing/computers, and drafting.

Panels (b) and (c) of [Figure 21.22 "Intended Academic Major Area, 2007 Survey of First-Year College Students"](#) present the same information in two types of charts. Panel (b) is an example of a pie chart; Panel (c) gives the data in a bar chart. The bars in this chart are horizontal; they may also be drawn as vertical. Either type of graph may be used to provide a picture of numeric information.

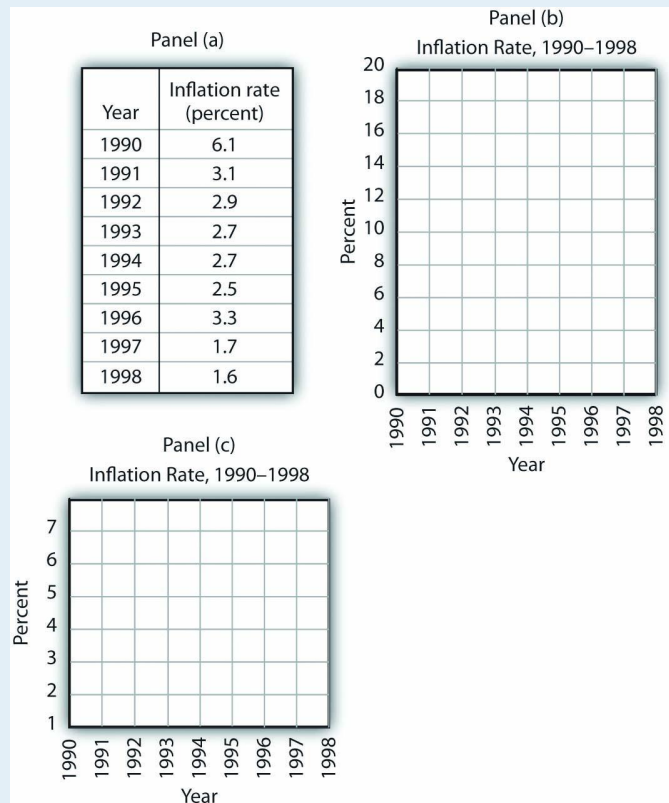
KEY TAKEAWAYS

- A time-series graph shows changes in a variable over time; one axis is always measured in units of time.
- One use of time-series graphs is to plot the movement of two or more variables together to see if they tend to move together or not. The fact that two variables move together does not prove that changes in one of the variables cause changes in the other.
- Values of a variable may be illustrated using a table, a pie chart, or a bar chart.

TRY IT!

The table in Panel (a) shows a measure of the inflation rate, the percentage change in the average level of prices below. Panels (b) and (c) provide blank grids. We have already labeled the axes on the grids in Panels (b) and (c). It is up to you to plot the data in Panel (a) on the grids in Panels (b) and (c). Connect the points you have marked in the grid using straight lines between the points. What relationship do you observe? Has the inflation rate generally increased or decreased? What can you say about the trend of inflation over the course of the 1990s? Do you tend to get a different “interpretation” depending on whether you use Panel (b) or Panel (c) to guide you?

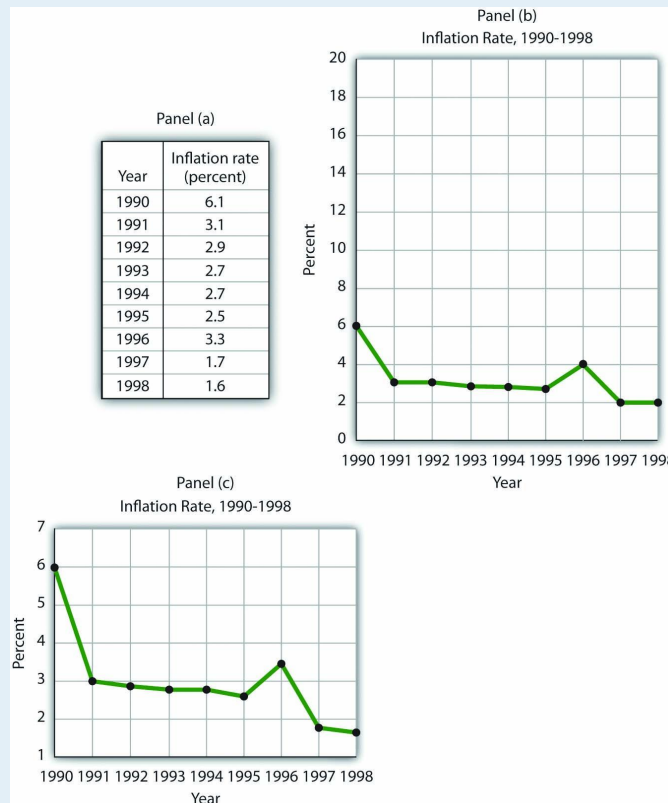
Figure 21.23



ANSWER TO TRY IT!

Here are the time-series graphs, Panels (b) and (c), for the information in Panel (a). The first thing you should notice is that both graphs show that the inflation rate generally declined throughout the 1990s (with the exception of 1996, when it increased). The generally downward direction of the curve suggests that the trend of inflation was downward. Notice that in this case we do not say negative, since in this instance it is not the slope of the line that matters. Rather, inflation itself is still positive (as indicated by the fact that all the points are above the origin) but is declining. Finally, comparing Panels (b) and (c) suggests that the general downward trend in the inflation rate is emphasized less in Panel (b) than in Panel (c). This impression would be emphasized even more if the numbers on the vertical axis were increased in Panel (b) from 20 to 100. Just as in [Figure 21.19 "Two Tales of Taxes and Income"](#), it is possible to make large changes appear trivial by simply changing the scaling of the axes.

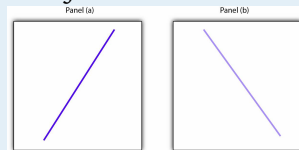
Figure 21.24



PROBLEMS

- Panel (a) shows a graph of a positive relationship; Panel (b) shows a graph of a negative relationship. Decide whether each proposition below demonstrates a positive or negative relationship, and decide which graph you would expect to illustrate each proposition. In each statement, identify which variable is the independent variable and thus goes on the horizontal axis, and which variable is the dependent variable and goes on the vertical axis.

Figure 21.25



- An increase in national income in any one year increases the number of people killed in highway accidents.
 - An increase in the poverty rate causes an increase in the crime rate.
 - As the income received by households rises, they purchase fewer beans.
 - As the income received by households rises, they spend more on home entertainment equipment.
 - The warmer the day, the less soup people consume.
- Suppose you have a graph showing the results of a survey asking people how many left and right shoes they owned. The results suggest that people with one left shoe had, on average, one right shoe. People with seven left shoes had, on average, seven right shoes. Put left shoes on the vertical axis and right shoes on the horizontal axis; plot the following observations:

Left shoes	1	2	3	4	5	6	7
Right shoes	1	2	3	4	5	6	7

Is this relationship positive or negative? What is the slope of the curve?

3. Suppose your assistant inadvertently reversed the order of numbers for right shoe ownership in the survey above. You thus have the following table of observations:

Left shoes	1	2	3	4	5	6	7
Right shoes	7	6	5	4	3	2	1

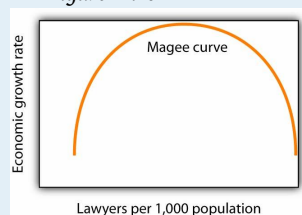
Is the relationship between these numbers positive or negative? What's implausible about that?

4. Suppose some of Ms. Alvarez's kitchen equipment breaks down. The following table gives the values of bread output that were shown in [Figure 21.12 "A Nonlinear Curve"](#). It also gives the new levels of bread output that Ms. Alvarez's bakers produce following the breakdown. Plot the two curves. What has happened?

	A	B	C	D	E	F	G
Bakers/day	0	1	2	3	4	5	6
Loaves/day	0	400	700	900	1,000	1,050	1,075
Loaves/day after breakdown	0	380	670	860	950	990	1,005

5. Steven Magee has suggested that there is a relationship between the number of lawyers per capita in a country and the country's rate of economic growth. The relationship is described with the following Magee curve.

Figure 21.26



What do you think is the argument made by the curve? What kinds of countries do you think are on the upward- sloping

region of the curve? Where would you guess the United States is? Japan? Does the Magee curve seem plausible to you?

6. Draw graphs showing the likely relationship between each of the following pairs of variables. In each case, put the first variable mentioned on the horizontal axis and the second on the vertical axis.
 1. The amount of time a student spends studying economics and the grade he or she receives in the course
 2. Per capita income and total expenditures on health care
 3. Alcohol consumption by teenagers and academic performance
 4. Household income and the likelihood of being the victim of a violent crime