



This is “Writing the Business Case: Design a Report for the App”, chapter 11 from the book [Designing Business Information Systems: Apps, Websites, and More \(index.html\)](#) (v. 1.0).

This book is licensed under a [Creative Commons by-nc-sa 3.0](http://creativecommons.org/licenses/by-nc-sa/3.0/) (<http://creativecommons.org/licenses/by-nc-sa/3.0/>) license. See the license for more details, but that basically means you can share this book as long as you credit the author (but see below), don't make money from it, and do make it available to everyone else under the same terms.

This content was accessible as of December 29, 2012, and it was downloaded then by [Andy Schmitz](#) (<http://lardbucket.org>) in an effort to preserve the availability of this book.

Normally, the author and publisher would be credited here. However, the publisher has asked for the customary Creative Commons attribution to the original publisher, authors, title, and book URI to be removed. Additionally, per the publisher's request, their name has been removed in some passages. More information is available on this project's [attribution page](http://2012books.lardbucket.org/attribution.html?utm_source=header) ([http://2012books.lardbucket.org/attribution.html?utm\\_source=header](http://2012books.lardbucket.org/attribution.html?utm_source=header)).

For more information on the source of this book, or why it is available for free, please see [the project's home page](#) (<http://2012books.lardbucket.org/>). You can browse or download additional books there.

## Chapter 11

---

### Writing the Business Case: Design a Report for the App

## 11.1 Pros and Cons of PowerPoint

### LEARNING OBJECTIVES

1. Present evidence for your conclusions
2. Determine when to use PowerPoint as a report writer rather than a presentation tool
3. Describe the conditions under which PowerPoint fails to communicate well

### Introduction

When applying for a business loan or seeking investors, you will have to present your project. You are likely to fare better if you follow accepted standards of business presentations. One of those standards is the **schematic report**<sup>1</sup>.

You are probably already familiar with the use of PowerPoint to create presentations for an audience. Such presentations will be covered in more detail in the next chapter. However, in this chapter we look at PowerPoint as a report generation tool.

In business, PowerPoint has been gaining traction as a page layout tool to generate reports. These reports use smaller fonts, mix text and graphics, and are designed primarily to be read rather than projected on the screen. Businesses use different names for this type of report including decks, reading decks, and schematic reports.

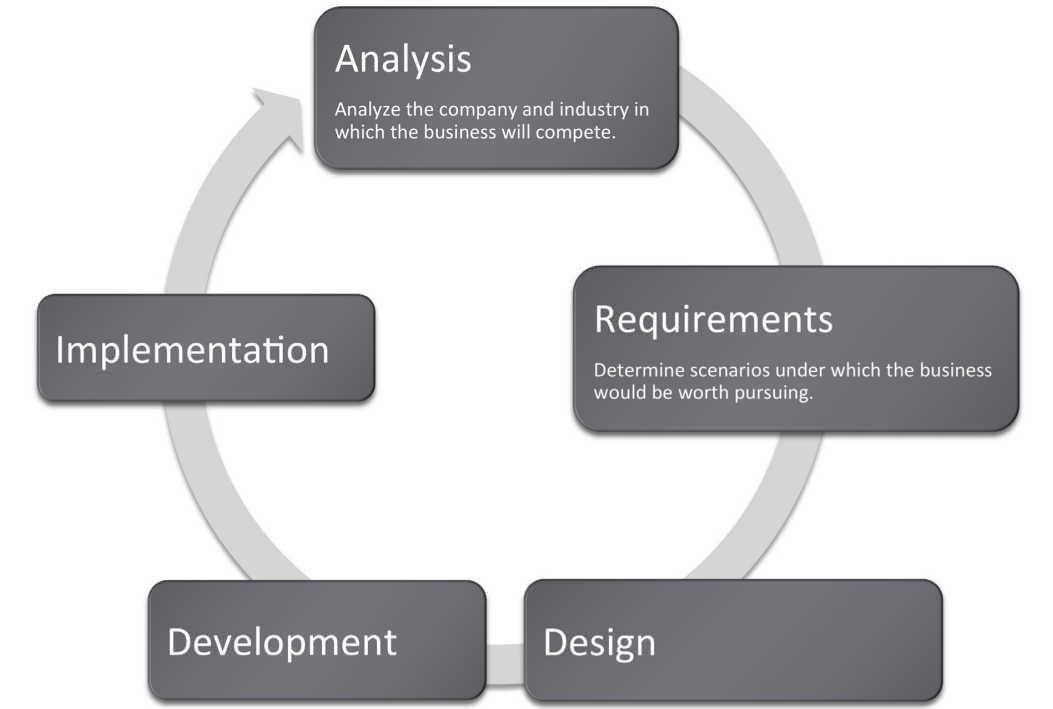
Used in this way, PowerPoint becomes equivalent to a poor man's desktop publishing package—but with the added advantage that the report also fits neatly on the screen.

However, it is difficult for an audience to read a font smaller than 24 point onscreen. Small font presentations (around 11 point) raise the obvious question as to why the presentation should be projected at all.

1. A business presentation combining concise text and graphics. Schematic reports should be brief, well organized, and easy to navigate. Though usually designed in PowerPoint, schematic reports are intended primarily to be read rather than projected. The term was coined by Robert Heckman of Syracuse University.

## Where Are We in the Life Cycle?

Many information systems projects are conceived of in a life cycle that progresses in stages from analysis to implementation. The diagram below shows the stages that we touch in the current chapter:



## Focus on Evidence

Rarely can you prove anything in business. The best you can do is give evidence for your position. Your audience will decide whether your evidence is compelling. And if it is not compelling, well then you have learned something for next time.

In most business presentations, you will need to get across information that inspires your audience to take action. Design is not a substitute for good content, but the combination of the two produces excellent results. The table below demonstrates a method of critical thinking. The method shows how to organize an argument in order to support a claim. Note that every point is supported by hard evidence. This format can be used both in papers and presentations:

Table 11.1

Paragraph	Thought Process	Sample Words
Claim or thesis	Here's what I believe based on points A, B, and C.	I believe we should allocate \$50K to investigate sustainable business practices because of cost savings, employee morale, and community support.
Evidence of A:  examples and credible sources	Here's why I believe A.	Cost savings through reduced energy usage.
Evidence for B:  examples and credible sources	Here's why I believe B.	Improved employee morale by working for socially responsible company.
Evidence for C:  examples and credible sources	Here's why I believe C.	Community support for green practices.

Paragraph	Thought Process	Sample Words
Summary	As I have shown, my belief _____ is reinforced by points A, B, and C.	In summary, cost savings, employee morale, and community support, encourages allocation of \$50K to investigate sustainable business practices.

<p>A</p> <p>B</p> <p>C</p>	<p>Promoting Sustainable Business Practices Sustainable business practices result in cost savings, improved employee morale, and community support. A relatively small investment of \$50K will allow us to identify ways to adopt sustainable practices.</p> <p>IBM has run a series of ads that clearly highlight the cost savings accrued through sustainable practices. The cost savings derive primarily from reduced energy usage.</p> <p>In addition to cost savings, employees prefer to work for a company that is viewed as a good community citizen. Corporations have for years supported charitable organizations in their communities. However, now employees also expect the company to adopt sustainable practices. Happy employees will have better morale and work harder.</p> <p>The green movement is very strong within the community. Since our business depends upon community support for both business transactions and favorable tax levies, we need to honor the community's commitment to sustainable practices.</p> <p>In summary, cost savings, improved employee morale, and community support can all be engendered by adopting sustainable practices. We need an immediate allocation of \$50K to move down this road.</p>
----------------------------	-----------------------------------------------------------------------------------------------------------------------------------------------------------------------------------------------------------------------------------------------------------------------------------------------------------------------------------------------------------------------------------------------------------------------------------------------------------------------------------------------------------------------------------------------------------------------------------------------------------------------------------------------------------------------------------------------------------------------------------------------------------------------------------------------------------------------------------------------------------------------------------------------------------------------------------------------------------------------------------------------------------------------------------------------------------------------------------------------------------------------------------------------------------------------------------------------------------------------------------------------------------------

### PowerPoint as a Report Writer

Traditionally students are taught to write reports using a word processor such as Microsoft Word. The emphasis in the reports is on grammar and composition. However, much of corporate America has been moving in a different direction. The primary means of formal communication in corporations is with PowerPoint.

PowerPoint was developed as a presentation graphics package. PowerPoint presentations are designed to supplement a live presenter. For this reason, the

fonts used tend to be large (around 24 point) and the words few (less than fifty per page) so that the audience can read them. The bullet points also serve as a cue for the presenter in lieu of note cards.

To put this in perspective, a single page of a word processed document could have 500 words or ten times as many words as a slide. The words would be set using a smaller font—usually 10 or 11 point.

With relatively few words to express oneself, every word should be carefully chosen. Unfortunately, very often we see the opposite—presentations hastily assembled at the last minute.

However, there is a growing movement to create presentations that can stand with or without the presenter. This requires using smaller fonts and adding far more text. The small text creates a presentation that can no longer be read easily by the audience. What should be a presentation turns into an eye test. To compensate, many times audience members are each provided with a copy of the presentation. So while they may not be able to read the screen, they can follow along.

Hopefully the copy provided to the audience contains one slide per page. Unfortunately, sometimes in an effort to save paper, the presenter will use a PowerPoint handout with three slides per page and a space for the audience to write notes. This simply transfers the eye test to paper.

The term used in corporate America to describe a PowerPoint presentation is a deck. The term has obvious ties to a deck of cards. And like a deck of cards, one can easily reorganize a deck to customize the presentation for a new audience. The term deck is used whether the slides are primarily designed for a presentation or primarily designed to be read. However, to be clear about which we mean, we will use the term schematic report to describe a deck intended to be read rather than projected.





complex, onto a single slide. Lack of text flow can lead to over abbreviation of complex concepts—sometimes with disastrous results. Second, PowerPoint resizes text automatically to fit on the slide. As you add words to a slide, the font shrinks in size so that all the text will fit. If the subsequent slide has fewer words, the text will be larger; if it has more words, the text will be smaller. Auto text resize leads to awkward differences in text size among slides—which does not look professional.

To expand on the text resize point a little bit more, consider that memos and other office documents are normally set in around 11 point type. PowerPoint slides usually opt for at least 24 point type. The no man’s land between 11 point and 24 point might be around 16 to 18 point. This looks like the font of a children’s book, which is not professional. The example below shows the body text at both 12 point and 18 point.

Both PowerPoint disadvantages—auto text resize, and one idea per slide—can be overcome. Some PowerPoint templates, such as **Pitchbook**<sup>2</sup>, suppress text resize. With the font locked at 11 point, the writer can avoid a no man’s land 16 or 18 point font. Overcoming the text flow problem is harder. Our recommendation is that the writer create all content in Microsoft Word and then flow the content into PowerPoint. In fact that is how we created the slides below.

In order to establish a community in which the preservation of the environment is a top priority, people must change the way they visualize the material world. Sustainability can be applied by the community as a whole or by individuals. Each level has started taking initiative in realizing the need for sustainability beyond basic environmental concerns. People are voicing concerns about organizations that aren’t effectively managing wastes, resources and energy. A major concern is the future prospect of greenhouse gas emission regulations for businesses. The continued focus on sustainability issues also leads to record heat waves, disastrous storms, increased energy prices, and awareness of these realizations influence individuals to align sustainability goals with business strategies: values, improving corporate image, reducing risk, and attracting and retaining employees.

Cities, businesses and individuals establishing green values and pursuing more sustainable living habits will benefit the environment. Whether sustainability is practiced by a community as a whole or by businesses, it needs individual participation within these organizations. In the following report, a business model for Eco-Scap business model will improve the level of sustainability within communities by providing steady employment opportunities, and offering a number of services that promote a sustainable lifestyle in citizens with green values. The remainder of this report, this business model will be discussed in terms of the placement of the business (local, national and beyond), the product itself (in four service segments), the pricing (financial analysis), and the promotion (advertising and use of public relations). *Through the implementation of this business model, sustainable corporate experience value through the stable revenues, employment opportunities and the spreading of green values provides.*



11 point (above) is good for a written report. 16 point (following) looks like the font in a children’s book.

2. A PowerPoint template well suited for creating schematic reports because of its small font size and versatile layouts.

In order to establish a community in which the preservation of the environment is a top priority, people must begin to assess and change the way they live in the material world. Sustainability can be applied by the community, by businesses, and by individuals. Each level has started taking initiative to address the need for sustainability beyond basic environmental awareness. People have concerns about organizations that aren't effectively managing wastes and emissions. Parallel to this concern is the future prospect of greenhouse gas regulations for businesses. The continued practice of ignoring sustainability leads to record heat waves, disastrous storms, increased energy prices, and food insecurity. The awareness of these realizations influences individual and organizational sustainability goals with business strategies: creating new business value, improving corporate image, reducing risk, and attracting and retaining employees.

### Does PowerPoint Corrupt Us?

There is a third, more controversial, disadvantage of PowerPoint. Edward Tufte argues that PowerPoint encourages the pitching of ideas rather than dispassionate reflection. He cautions that when we pitch out, we corrupt within. In other words, if we tend to use a medium designed to sell ideas, rather than discuss them, we might lose our own objectivity to the detriment of our message—and our organization. Certainly there is some evidence for Tufte's position. A quick look at the built-in PowerPoint templates, reveals a decidedly marketing orientation. For example, there is a built-in Pitchbook template, but there does not appear to be a built-in "weigh all angles" template.

Tufte terms the tendency to market and simplify ideas the cognitive style of PowerPoint. He is especially troubled by the use of bullets rather than complete sentences and paragraphs to convey information. Such presentations he argues should not circulate alone as though they are documents. He provides a compelling example of the dangers of PowerPoint reports with the Columbia Space Shuttle disaster. On February 1, 2003, the Columbia Space Shuttle disintegrated and burned up on reentry, when its heat shield was compromised by a foam hit 16 days earlier. The official presidential report faulted the way that the potential danger had been poorly communicated by Boeing using bulleted lists rather than paragraphs and complete sentences.

Tufte goes on further to claim that for on screen presentations, PowerPoint should only be used as a slide projector to project images. Words should be supplied by the speaker. There is some truth to the slide projector position as we shall see in the next section.

Having said that, however, perhaps Tufte's remarks should be taken as a caution, rather than a condemnation of the PowerPoint medium. Having fewer words makes it more challenging to communicate, but does not preclude effective communication.

## **Columbia Disaster**

On February 1, 2003, the Space Shuttle Columbia disintegrated upon re-entry to the earth's atmosphere. All seven astronauts on board perished. The cause of the accident was a piece of hard foam insulation the size of a small briefcase and about the same weight as a basketball, which broke off the external fuel tank, slamming into the wing at 500 miles per hour during liftoff sixteen days earlier. The impact would be the equivalent of a 100 pound weight dropped from 200 feet in the air.

NASA knew about the foam hit the day after liftoff. They asked the fuel tank manufacturer, Boeing, to analyze the foam hit. Boeing developed a computer program called Crater to analyze the effects of foam hits. The program was calibrated using the history of foam hits on previous flights. To be safe, Crater was programmed to over predict damage. As it happens, foam hits on prior launches were a regular occurrence. However, most of the foam pieces were tiny and put only minor chinks in the ceramic heat shield tiles. However, this piece of foam was much bigger. Nonetheless, NASA's reading of the report back from Boeing was that there was no danger to Columbia. They took no further action.

Unfortunately, the report back from Boeing took the form of a poorly designed PowerPoint deck. Edward Tufte presents a compelling case that one of the contributing factors in the Columbia Space Shuttle accident was this deck. The key slide from that deck appears on the following page. Tufte argues that PowerPoint encourages the type of sloppy writing that appears on the key slide. As you read the "Before" slide, it will appear that there is very little danger to Columbia. The title of the slide, "Review of Test Data Indicates Conservatism for Tile Penetration," gives a false sense of reassurance. In fact, they are talking about the Crater program being conservative, not the projected damage to Columbia. Tufte feels that an author writing in complete sentences and paragraphs in a report would be less likely to be misunderstood. Maybe.

However, we would argue that the real culprit is bad writing. Bad writing is bad writing whatever the medium of expression. To us, it appears that the authors of the slide were trying to sell the virtues of the Crater program rather than acknowledge its limitations. Selling has a place at the beginning of a presentation to engage the audience interest. However, selling should never be mixed with content.

To make our point, we rewrote the key slide to remove the selling, express clearly what it really provides evidence for, and what it should have concluded. We believe that our rewrite would not have been similarly misunderstood. Tufte, Edward, *The Cognitive Style of PowerPoint*, Graphics Press, May 2003.

Review of Test Data Indicates Conservatism for Tile Penetration
<ul style="list-style-type: none"><li>▪ The existing SOFI on tile test data used to create Crater was reviewed along with STS-87 Southwest Research data<ul style="list-style-type: none"><li>– Crater overpredicted penetration of tile coating significantly<ul style="list-style-type: none"><li>▪ Initial penetration to described by normal velocity<ul style="list-style-type: none"><li>– Varies with volume/mass of projectile (e.g. , 200t/sec for 3cu. In)</li></ul></li><li>▪ Significant energy is required for the softer SOFI particle to penetrate the relatively hard tile coating<ul style="list-style-type: none"><li>– Test results do show that it is possible at sufficient mass and velocity</li></ul></li><li>▪ Conversely, once tile is penetrated SOFI can cause significant damage<ul style="list-style-type: none"><li>– Minor variations in total energy (above penetration level) can cause significant tile damage</li></ul></li></ul></li><li>– Flight Condition is significantly outside of test database<ul style="list-style-type: none"><li>▪ Volume of ramp is 1920cu in vs 3 cu in for test</li></ul></li></ul></li></ul>

*The original Boeing slide (above) and the authors' rewrite to clarify the material below. Lead off with your conclusion and then give evidence.*

### Unable to Predict Damage to Columbia

- **The Crater software used to predict tile damage was calibrated using a foam hit 600 times smaller than the foam that hit Columbia on lift-off.**
  - 1920 in<sup>3</sup> vs. 3 in<sup>3</sup> for test.
  - Therefore, as a predictor, Crater is useless in this case.
  - Nonetheless, it should be noted that even the tiny foam particles used to calibrate Crater can penetrate the tiles when they strike with sufficient velocity.
  - Once tiles are penetrated, significant damage to the spacecraft is possible.
- **We recommend immediate visual inspection of the wing to assess damage.**

### KEY TAKEAWAYS

- Reports should use a font size around 11 point.
- Disadvantages of PowerPoint include oversimplification of ideas, inconsistent font sizes, and a tendency to pitch rather than discuss ideas.

### QUESTIONS AND EXERCISES

1. Does the abbreviated style of PowerPoint require even better writing? Explain.

## 11.2 Schematic Report

### LEARNING OBJECTIVES

1. Create a schematic report used in business communications
2. Make a business case to have investors or a bank provide development funds for your iPhone app
3. Integrate deliverables produced earlier in the course to help make the business case

### Report vs. Presentation

A schematic report minimally contains the following elements.

1. Title page with author.
2. Executive summary: A summary analysis of the report with the key facts, issues, and conclusions. An executive should be able to get the gist of your entire report just by reading the executive summary.
3. Table of contents—with page numbers identifying section and second level headings only.
4. Introduction.
5. Body: that includes the analysis and recommendations (most of your report). To provide continuity the evidence should point back to the main argument.
6. Conclusion.

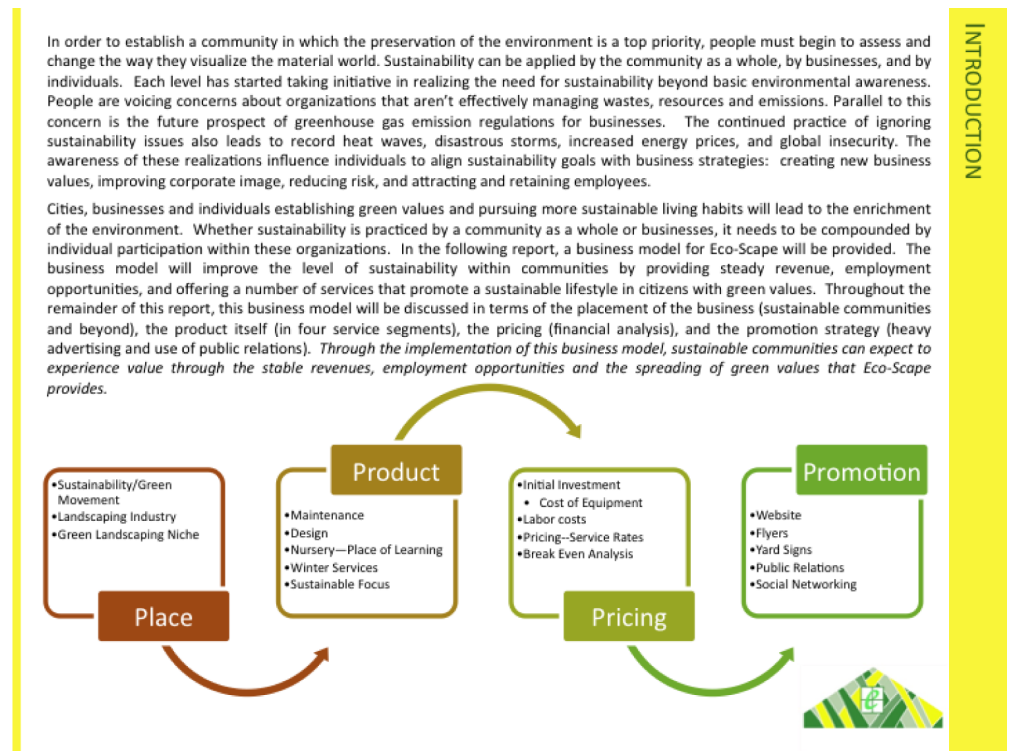
The report may also include a letter of transmittal, references, and appendices.

If a schematic report contains too much detail to be projected, what can you use for your presentation? The solution is to create two decks—a schematic report intended to be read and an accompanying **presentation**<sup>3</sup> intended to be projected. The task is not as hard as it might seem. Schematic reports tend to be heavy on graphics. All of those graphics can be copied from the schematic report to the presentation report. Within the presentation, those graphics should be enlarged, perhaps to fill the entire screen. Key summary points can similarly be lifted from the schematic report while leaving the bulk of the text behind. The speaker will provide the gist of the text during the presentation. The two decks can even run in the same order so that the audience can follow along in the written report.

3. A presentation primarily designed to be projected which combines brief text and graphics. Presentations use few words and large fonts for audience readability.

Hopefully, Microsoft will one day modify PowerPoint so that it produces the presentation automatically from the schematic. Here is how it might work. The writer tags text and graphics from the schematic report that are intended for the presentation. PowerPoint automatically enlarges the tagged graphics to fill the screen. The tagged text is similarly enlarged to at least 24 point, then placed in a text box overlaying the illustration—like subtitles in a foreign movie. When the slide loads it could even begin with the slide from the schematic, which then morphs to become the presentation slide.

Until Microsoft provides the transformation utility, we will have to create the presentation from the schematic ourselves. The easiest way to do this is by beginning with the schematic and then stripping it down to the graphics and key text, then enlarging those and arranging them on the screen.



Page from schematic report (above), which matches the presentation slide (below). The key sentence from the schematic slide becomes the title of the presentation slide. The artwork is enlarged. Note that even the text in the artwork has been enlarged.

Sustainable communities can expect to experience value through the stable revenues, employment opportunities and the spreading of green values that Eco-Scape provides.



## Writing an Executive Summary

Every schematic report leads off with an executive summary. An executive summary usually occupies one page and summarizes the key facts, issues, and conclusions of the report. A manager should be able to garner enough information from the executive summary. There are many definitions of an executive summary—some are highly specific. We have chosen to go with one of the more general definitions modified from: [smallbusinessdictionary.com](http://smallbusinessdictionary.com) to make a decision. The rest of the report is effectively backup if there are questions that arise from the executive summary.

Many times a senior level manager will not even read past the executive summary. Rather they will assign one or more junior level managers to follow up on a subsection of the report. Looked at this way, the executive summary is obviously something that you want to spend a lot of time crafting—not a reluctant chore at the end of the process.

The key to writing an executive summary is to get quickly to the point. We can actually tie the parts of the executive summary back to terms with which we are already familiar:



- Key facts—what is the current state? What are enablers that will help with the proposed solution?
- Issues—what are the barriers that would impede the proposed solution?
- Conclusions—what is the report specifically recommending? What course of action should the reader take?

One of the most common mistakes is to treat the executive summary as an introduction to the report. You will have an opportunity later to write a gentle introduction to the report, but not in the executive summary.

Because our reports are relatively short, you probably will reference most sections in the executive summary. However, in a larger report, there may be entire foundation or due diligence sections not covered in the executive summary. That's OK. You still need to do the due diligence to make your case. When deciding what to include simply ask yourself, would a manager need to know this to make a decision?

The purpose of this report is to provide a business model for Eco-Scape. The report will be divided into four sections that will describe the business' marketing mix according to the business' target market, services provided, promotion strategy, and financial analysis.

**Industry Research and Analysis Supports the Need for Eco-Scape**

Research suggests that there are three main ideas associated with a sustainable community; environment, equity, and economy. These ideas must work together in harmony for a sustainable community to function correctly. It was also found that there are six main needs that need to be met within a community, these being food, energy, water, shelter, jobs and infrastructure. Eco-Scape brought these ideas together to create a business model that will support the economy and functionality of a sustainable community and create jobs while spreading sustainable goals and ideals to a broad audience.

**Eco-Scape's Business Model: Four Landscape Service Segments**

Eco-Scape's business model is divided into service segments including basic lawn maintenance, sustainable landscape design, snow removal services, and a nursery. Ideally, all of Eco-Scape's employees will come from the community where it is located. The employment model consists of four areas including administrative, maintenance, design, and nursery management. The core needs of the company require 29 employees and is highly scalable as the client base expands.

**Promotional Strategy**

Eco-Scape will use many promotion outlets to advertise the business. Fliers, yard signs, social networking tools, and a user friendly website will be created and used to attract customers. Eco-Scape has also picked a hypothetical location for their business to show the ease of promoting and encouraging green ideals in a city that is involved in these practices and the possibility for growth.

**Financial Analysis**

Finally, Eco-Scape did a financial analysis for the business. This includes costs associated with the initial equipment investment, annual energy expenses, annual employment expenses, forecasted sales breakdown, and a simplified income statement. Using these models, the report provides a break-even analysis of the number of sales that are required to cover costs of one year of operations. Based on these figures, it is apparent that the business will be profitable and add value to sustainable communities.

After researching, creating a business model, and doing a financial analysis, it can be seen that Eco-Scape has the potential to grow and prosper as a premier sustainable landscaping business. The value Eco-Scape will add exists in its profitability, employment, and, most importantly, its continuous encouragement and influence on a sustainable and green way of living.



*An executive summary should highlight the key facts, issues, and conclusions of the report. The example above is pretty good, but it is missing the issues—what barriers are present that would prevent the proposed solution?*

### KEY TAKEAWAYS

- You should prepare both a written report and a PowerPoint presentation rather than projecting the written report.
- The most important part of your report may be the executive summary as that may be the only page a busy manager will read.

### QUESTIONS AND EXERCISES

1. Write an executive summary of your decision process in choosing your university.

## 11.3 Template for the Report

### LEARNING OBJECTIVES

1. Choose an appropriate template for a schematic report
2. Modify the master page to change the look and feel of the report
3. Choose an appropriate layout for each page of the report

### The Pitchbook Template

While you could custom design a template for your schematic report, it is far easier to begin with a template and then modify it to fit your needs. We recommend the Pitchbook template. In spite of its name, the template is fairly reserved in its appearance. We recommend Pitchbook, because of its fonts, layouts, and table of contents.

The font in Pitchbook is Calibri, a Microsoft font designed to be read well on screen and in print. The body text size is 11 point. Curiously, minor section headings within a slide are set even smaller at 10 point, though they still stand out since there are set in white text on a colored background. The only disproportionate font is found in the major section headings that run down the right hand side of the page. These are set in 22 point white text on a large colored background. Why would we want the most prominent visual element on the screen to be the section that we happen to be in? Is navigation within say a hundred page report so onerous? To put this in perspective, consider that most textbooks bury the section name inconspicuously in a discreet footer—and usually set the footer in a smaller font than the body text. However, this defect can be remedied by modifying the slide master to reduce both the font size and background size of the major section headings.

The layouts that Pitchbook provides are versatile and have a consistent look and feel. Each slide can have a layout appropriate to its content—whether that is section title, heading only, or 1 up, 2 up, 3 up, 4 up, or 5 up. No matter which layout is chosen the heading and body text styles remain the same.

The table of contents in Pitchbook is just another layout called Agenda. Note how this name gives away the intention of presenting rather than reading the Pitchbook. We mention table of contents separately because though it may seem like a minor thing, a table of contents is often missing in reports.

**About the Template**


Pitch books are structured presentations with tightly packed text and graphics. They are usually intended for print rather than projection. Some typical characteristics of a pitch book presentation include:

1. Smaller text sizes and more dense content layouts to enable communication of large amounts of information
2. Simple graphical elements that print quickly and accurately
3. High degree of consistency between slides and among sections of slides

In the **Elements Gallery**, click the **Slide Layouts** tab, and then click the layout that you want.

**Customizing the Logo**

To customize this template for your business, you might want to replace our generic logo with your own.


➔

My Logo

To do this for all slides, go into Slide Master View.


- On the **View** menu, point to **Master**, and click **Slide Master**.


From here, you can add your own logo. You can also customize or add additional layouts to create even more types of slides with this template.

**Sections of Slides**

To distinguish between sections of slides and still maintain the template's simple look, you can vary the colors of your slides:

1. On the **View** menu, click **Normal**.
2. In the top of the left pane, click the **Slides** tab, and then select the slides that you want.
3. On the **View** menu, click **Formatting Palette**.
4. Under **Document Theme**, click the arrow next to **Colors**, and then click the theme color that you want.





The Pitchbook template includes a slide with instructions on how to customize the template.

## Templates, Themes, Layouts, Masters

Every deck is based on a theme. The **theme**<sup>4</sup> specifies a coherent set of colors, fonts, backgrounds, and slide **layouts**<sup>5</sup>. Even the blank white background with which PowerPoint starts up is a theme called Office. Best practice is to choose a theme ahead of adding content to your presentation. That way you can ensure that the content fits well within the structure of a particular theme.

4. Defines a set of background elements, colors, and fonts as well as a set of slide layouts.
5. The organization of items on a page. For example, a 2up layout consists of two blocks of images and/or text.
6. Model slides that define the theme elements. The slide master defines the background elements, colors, and fonts. The layout masters provide a menu of possible layouts to apply to a slide.

Every theme is defined by a slide **master**<sup>6</sup>. The master is a series of model slides that define the theme and its layouts. Any change to the slide master affects every slide in the presentation. If you want to modify the theme, for example by changing the text size on the section heading, then you should do so on the slide master.

The slide master consists of a large master slide and smaller layout masters. The master slide is where most of the background elements, fonts, and colors are defined. The layout masters define the placement of items on each slide. Every slide can have a different layout and yet still look like it belongs to the presentation. For example 1 up, 2 up, 3 up, 4 up, and so forth are all different slide layouts. Furthermore, 2 up in one theme may have different spacing than 2 up in another.

These differences are part of the reason that it is so critical to choose the theme in advance.

A **template**<sup>7</sup> takes this process one step further. A template is a theme with content slides already preloaded. Templates help ensure that the content appears in a particular order.

For our purposes we begin with the Pitchbook template because of its theme. The theme specifies small fonts and clear section headings. That Pitchbook has slides already made is of no consequence to us and in fact we will replace those slides with our own content. What we want is the theme with its layouts.

First we will customize the Pitchbook template to correct its minor flaws.

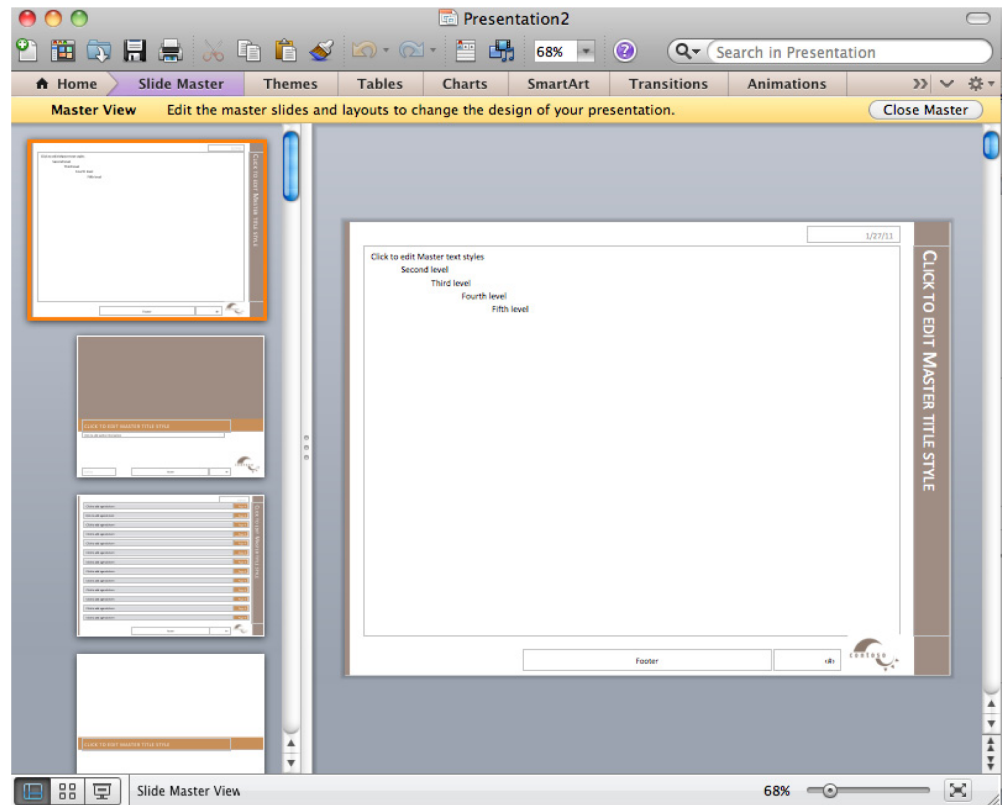
#### KEY TAKEAWAYS

- Templates, themes, layouts, and slide masters facilitate the graphic design of a PowerPoint deck.
- For a written report done in PowerPoint it is important to have uniform font sizes on each page.

#### QUESTIONS AND EXERCISES

1. Why does PowerPoint have a slide master in addition to the individual layout masters? Explain.

7. A model report in which the theme is predefined. In some templates even some of the slides are already created. For example, the Pitchbook template includes a title slide, a table of contents slide, and a section heading slide.



Slide master (top) with layout masters below it.

### L3 ASSIGNMENT: CREATE A SCHEMATIC REPORT

#### Setup

Start MS PowerPoint.

Choose a template. We recommend using the PowerPoint Pitchbook template. You may opt for a different template or even create your own but these designs should be cleared in advance.

(File > New > Presentations > Business > Pitchbook)

#### Content and Style

1. Title page with author.
2. Executive summary: A summary analysis of the report with the key facts, issues, and conclusions. An executive should be able to get the gist of your entire report just by reading the executive summary.
3. Table of contents—with page numbers identifying section and second level headings only. Do this last as PowerPoint does not automatically generate or update a table of contents. Also, you would be wise to avoid the table of contents slide in Pitchbook—it is overly decorated and difficult to work with. If you add or move sections after the fact, the table of contents is a chore to update. A bulleted list on a blank slide is just fine and very easy to update.
4. Introduction.
5. Body: that includes the analysis and recommendations (most of your report). To provide continuity the evidence should point back to the main argument.
6. Conclusion.
  - Apply all graphic design principles
  - Each slide should have 25 to 50% text. Obviously, there will be exceptions. Some slides may be all graphics, while other slides may be all text, e.g. the executive summary.
  - Make all text left justified. Avoid centered text or text justified to both margins.
    - Customize Pitchbook as follows:
      - Select View > Master > Slide Master.

- Reduce the major section headings from 22 point to 12 point. Reduce the size of the text background to match.
  - Replace the logo with your own. Because the logo appears in a slightly different position on different slides, you will need to replace the logo in three places: the large Slide Master, the Title layout, and the Section Header layout.
  - Change the theme colors to match colors for your app. Format > Theme Colors and modify accents #4 and #6.
  - Activate the page numbers with Insert > Header & Footer > then check page numbers.
- The Pitchbook master has multiple layouts—1 up, 2 up, 3 up, and so forth. Use these as appropriate.

Deliverables

Electronic submission: Post your PowerPoint file.

Paper submission: Create a printout of each slide of your report. Print two slides per page.



Sample pages from a schematic report. Note that the colors have been changed to match the brand.